

Ready To Cellar Collection.



Spiral Cellars

LONDON

The home of
at-home cellaring.



Pioneering design.
Peerless engineering.
Statement luxury.



Spiral Cellars
LONDON

Contents

4

The benefits of a
home wine cellar

6

The Ready to Cellar Collection

10

Label facing peg panels

12

Cork facing peg panels

13

Suspended bottle cradles

14

Ready to Cellar finishes palette

16

Pegs for customers' own panels

18

How to design your wine space

20

Ordering, delivery & installation

21

List of components

50

FAQs

52

Our alternative products

54

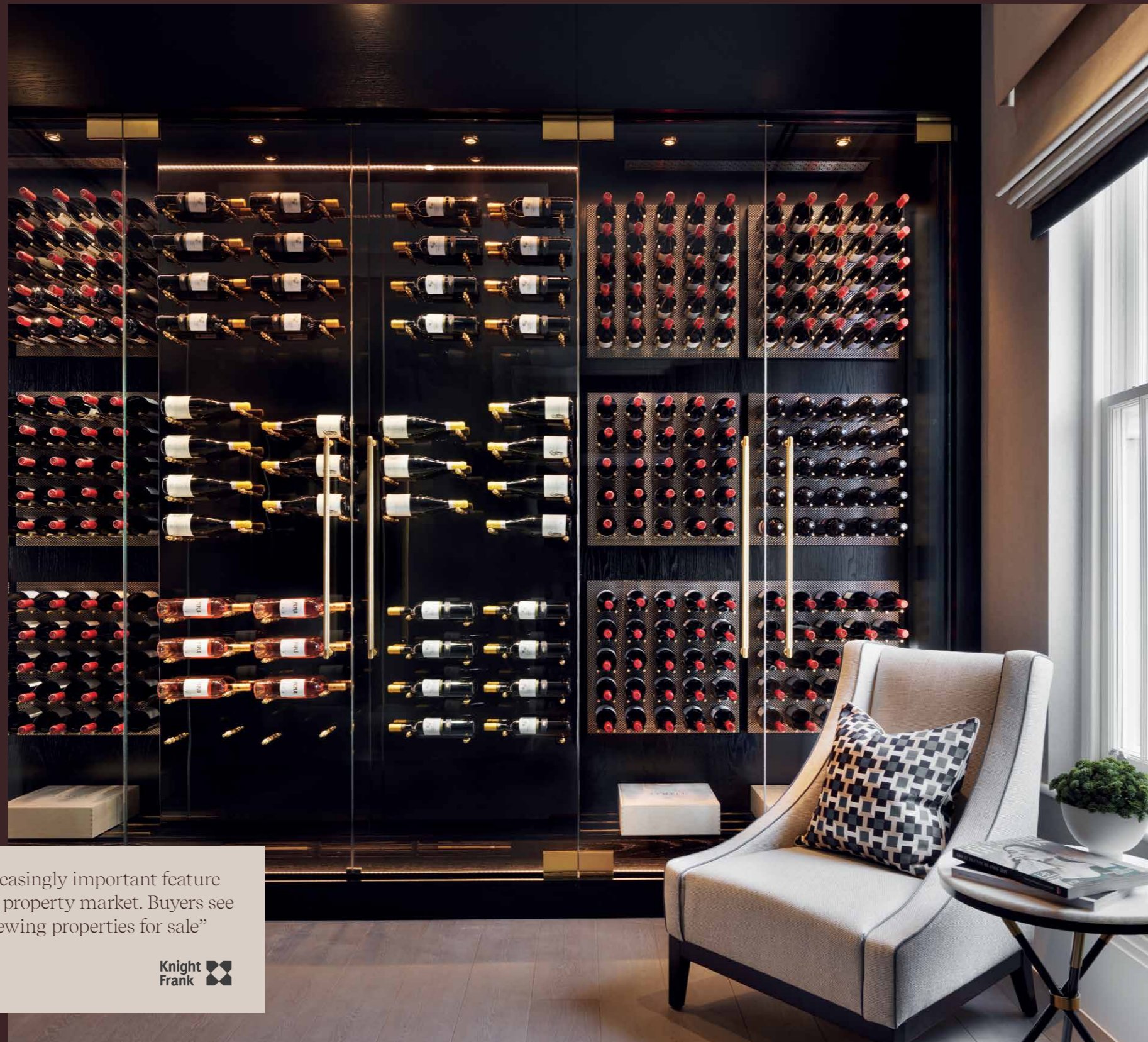
Climate control

For the love of wine.

There are a myriad of reasons why a home wine cellar makes sense. In the end they all boil down to the same thing - passion.

Owning a wine cellar gives you the freedom to truly indulge your passion for wine, wherever you are on your collecting journey.

- A dedicated wine space increases wine storage capacity at home, offering greater choice of what to drink.
- It provides space to grow your wine collection without cluttering up the house.
- A place to let your wine quietly mature and space to let your younger wines age.
- It creates a stunning design feature, a centre-piece or talking point that adds a 'wow factor' to the heart of your home.
- And is a smart investment that can increase the value of your home, making it more desirable for buyers.



Your wine deserves the extraordinary

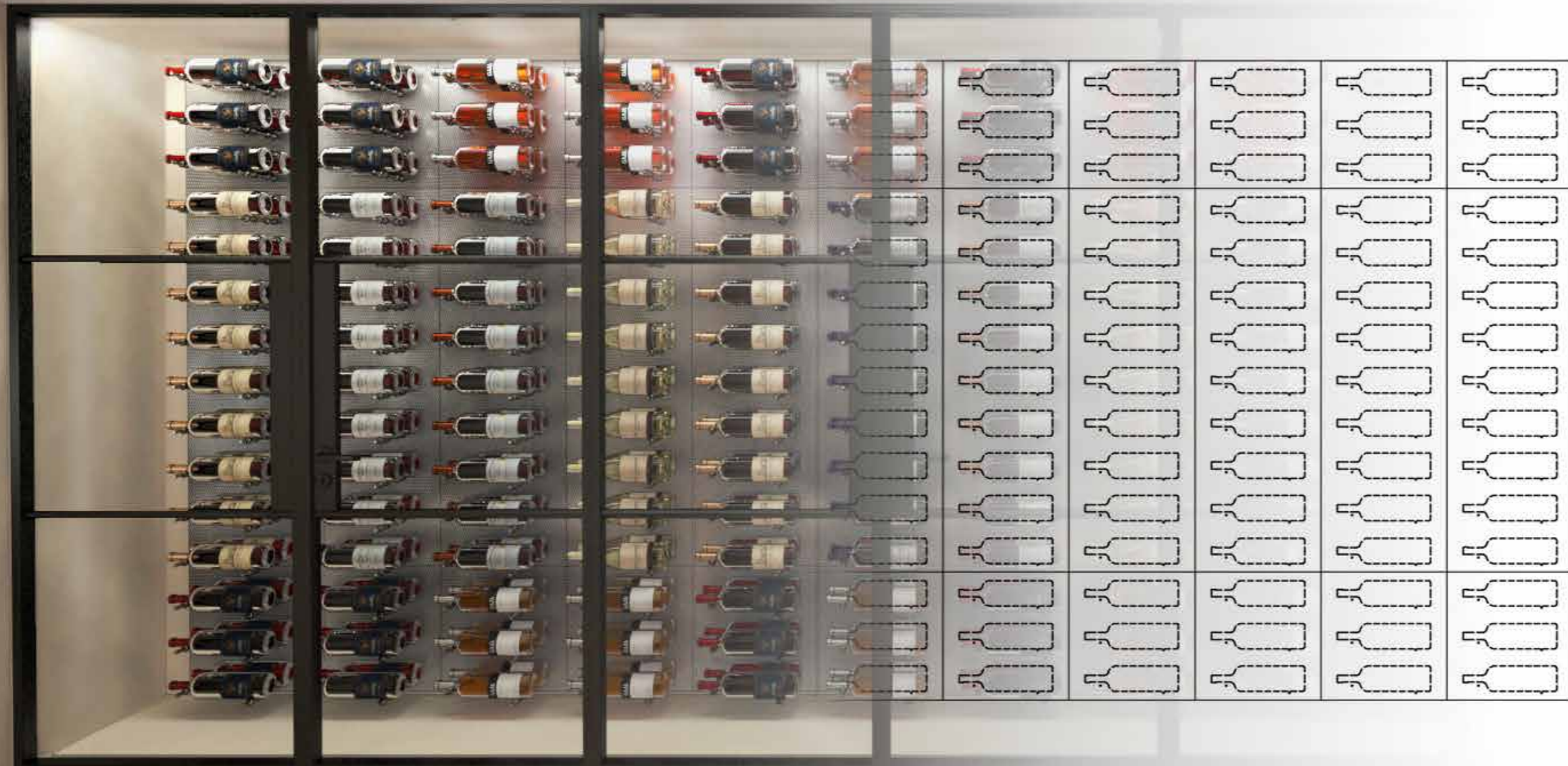
As the world's leading purveyor of luxury wine storage, with more than 40 years' experience, we know how to give your wine the chance to shine.

Having created over 5,000 purpose-built wine cellars in the UK and across the world, we have used our expertise to create a modular range of some of our more popular design features. Available as a range of components, they can be ordered as a kit for installation by your own contractors.

“Wine cellars have become an increasingly important feature in homes at the higher end of the property market. Buyers see them as an added bonus when viewing properties for sale”

Sam Sproston,
Partner, Knight Frank





Create a
bespoke
looking wine
cellar, room
or wall...

...without
the bespoke
price tag.

Kit range of
display and storage
components.

The Ready to Cellar Collection by Spiral Cellars is an exclusive range of some of the same exquisitely designed bottle display and storage components that we use in our custom-designed wine rooms, now available to purchase by private clients and trade professionals for use in independent cellaring projects.

The modular pieces can either be tessellated together as part of more complex pieced-together designs, or used as stand-alone features to create unique, self-built wine spaces to suit all interior styles and spaces. All pieces are available in a variety of finishes and sizes.

Modular kit range. Designed for you, by you.

Our Ready to Cellar Collection places you firmly in the cellaring driving seat, able to create statement bottle storage display pieces for your wine cellar, kitchen or entertainment spaces.

Use our modular sized, self-assembly, label facing or cork facing products to;

- Create bijou ambient wine storage within an existing alcove space.
- Dress a wine wall that is as much a work of art as it is a storage feature.
- Panel a breath-taking cavernous, fully climate-controlled wine room.



Whatever your vision,
the Ready to Cellar
Collection will allow you
to bring it to fruition.

Trade & private customers.

The Ready to Cellar Collection is the ideal option for those looking for a 'kit product' to design and build a wine room or wine wall themselves.

Initially conceived for our architectural, design, kitchen, hospitality and construction clients, the Collection is equally suitable for private clients looking to 'dress' a planned wine space within a larger build or refurbishment project and who already have access to a build team.



Ready to Cellar Collection pieces can be shipped to anywhere in the world and come flat-packed complete with all required fixings for self-assembly.

Three different ways to display your wine.

There are three different means of displaying wine bottles using components from the Ready to Cellar Collection.

1. Label facing peg panels.



Corks left



Corks right



Symmetrical

- Bottles are displayed horizontally on a panel in two uniform columns with labels facing outward. Each bottle rests on two pegs that are securely attached to the panel.
- The neck and body of the bottle rest on different sized supporting pegs. Each peg is specially shaped to the bottle profile and fitted with vibration dampening neoprene rings to gently 'seat' the bottle.
- Bottles in each column can point the same way for a uniform look (ie with all corks pointing either right or left) or to create a symmetrical arrangement, bottles can be rested with corks pointing left in one column and with corks pointing right in the other.
- Designed to hold 75cl bottles.



One deep



Two deep



Three deep



- Label Facing Peg Panels can be ordered to allow bottles to be stored one, two or three deep - thus the storage capacity of each board can be doubled or tripled if desired.
- Label Facing Peg Panels are available in a variety of sizes for maximum design flexibility.

Each display method can be used in the same project to create a myriad of wine storage designs. How many bottles you choose to display, and how you choose to display them is entirely up to you.

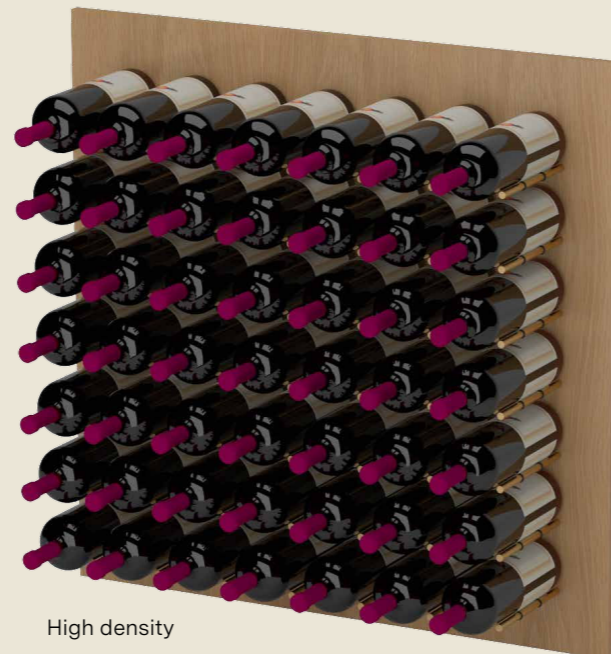
Panels are shipped flat-pack for self-assembly. They come with our own design extruded aluminium 2-part Z-clips that screw fix to a wall for easy setting-out alignment and 'lift and drop' fitting.

2. Cork facing peg panels.

- Bottles rest on pegs on a peg panel board, arranged horizontally with cork and foil facing outwards.
- Each bottle rests on two, identically sized metal pegs that are securely attached to a peg panel. The pegs are fitted with neoprene rings to gently 'seat' the bottle.
- Cork Facing Panels are available in a variety of sizes for maximum design flexibility.
- They are available in standard density and high density formats, with the latter offering increased bottle capacity.
- Designed to hold 75cl bottles.



Low density



High density

Both our Label Facing and Cork Facing Peg Panels are our own designs, available as a series of modular sized pieces that can either be individually hung on a wall to create an interior feature, or for greater bottle capacity, can be tessellated together to provide a wall of perfectly aligned bottle display.

*Note: Low Density Cork Facing and Label Facing peg panels align perfectly. High Density panels align differently.



3. Suspended bottle cradles.

- Bottles are individually rested on stainless steel cradles suspended between a pair of floor to ceiling suspension cables, creating the impression of bottles 'floating' in mid-air.
- A pair of cradles will support one bottle. Each pair contains two differently shaped cradles – one designed to hold the neck of the bottle, the other the body. Cradles are fitted with anti-vibration neoprene cushions to keep the bottles perfectly still.
- The cradles are arranged as an aligned pair between the cables in vertical column formation.
- For each column, the spacing between cradles (and thus bottles) can be vertically adjusted as desired.
- In designs featuring multiple columns, cradles can be spaced to arrange bottles as desired – in organised rows, alternate rows or positioned randomly.
- Suspension cables are ordered in sets of four 3m long cables (enough to create one column) and can be cut-to-length. They come with cradle cable tension fixings but you will need to supply your own wall fixings appropriate to your wall. See FAQs for details.
- Cradles are available to order as pairs.
- Designed to hold 75cl bottles.



Create using our comprehensive palette.

The Ready to Cellar Collection is designed by and exclusive to Spiral Cellars.

Components are only available for order in standard sizes and standard finishes.

Suitable for use in both ambient or climate-controlled wine spaces.

All items in the range are shipped in kit form for self-assembly.

Panel finishes

Panel boards are available in 6 different materials, giving you maximum design flexibility



Oak



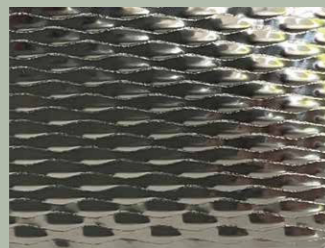
Walnut



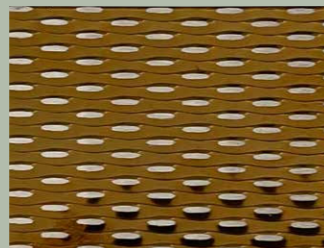
Dark stained oak



Spray painted to any RAL colour



Textured stainless steel



Textured brass plated stainless steel

Peg finishes

The pegs used in all our peg panel display boards are available in brass or stainless steel and come complete with all necessary fixings needed to attach the pegs to the panels.



Brushed stainless steel



Brushed brass



Use to create ambient wine storage or fully climate-controlled enclosed cellaring.

Display Pegs to fit customer's own panels.

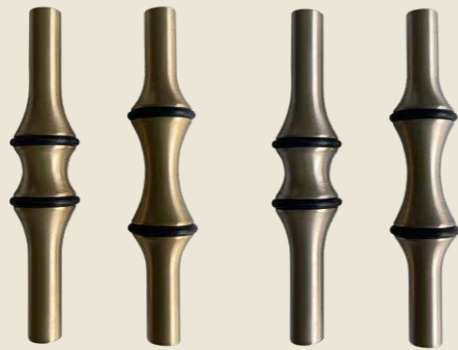
It is also possible to purchase our exclusively designed display pegs as individual items for fitting to a customer's own wall panels.

They can be ordered in pairs for single, double or triple bottle depth display. Pegs ordered in this way are shipped individually wrapped for protection and come complete with all the fixings required to fit them to any 20-25mm thick panel with a wood or particle board substrate backing. All pegs have concealed, barbed, threaded T-nut rear fixings that hold the pegs fast once fitted and prevent twist or wobble.

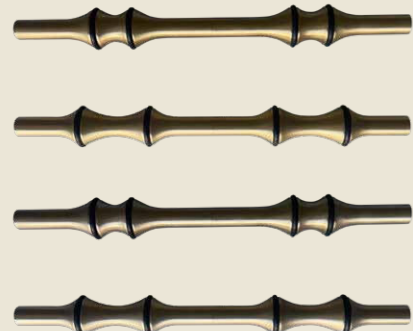
We can also supply alternative custom peg finishes and fixings for use with glass or metal panels and peg solutions for magnums and extension pegs. These non-standard pegs are only available as special order with a minimum quantity requirement per order.



Cork-facing pegs in brass or stainless steel



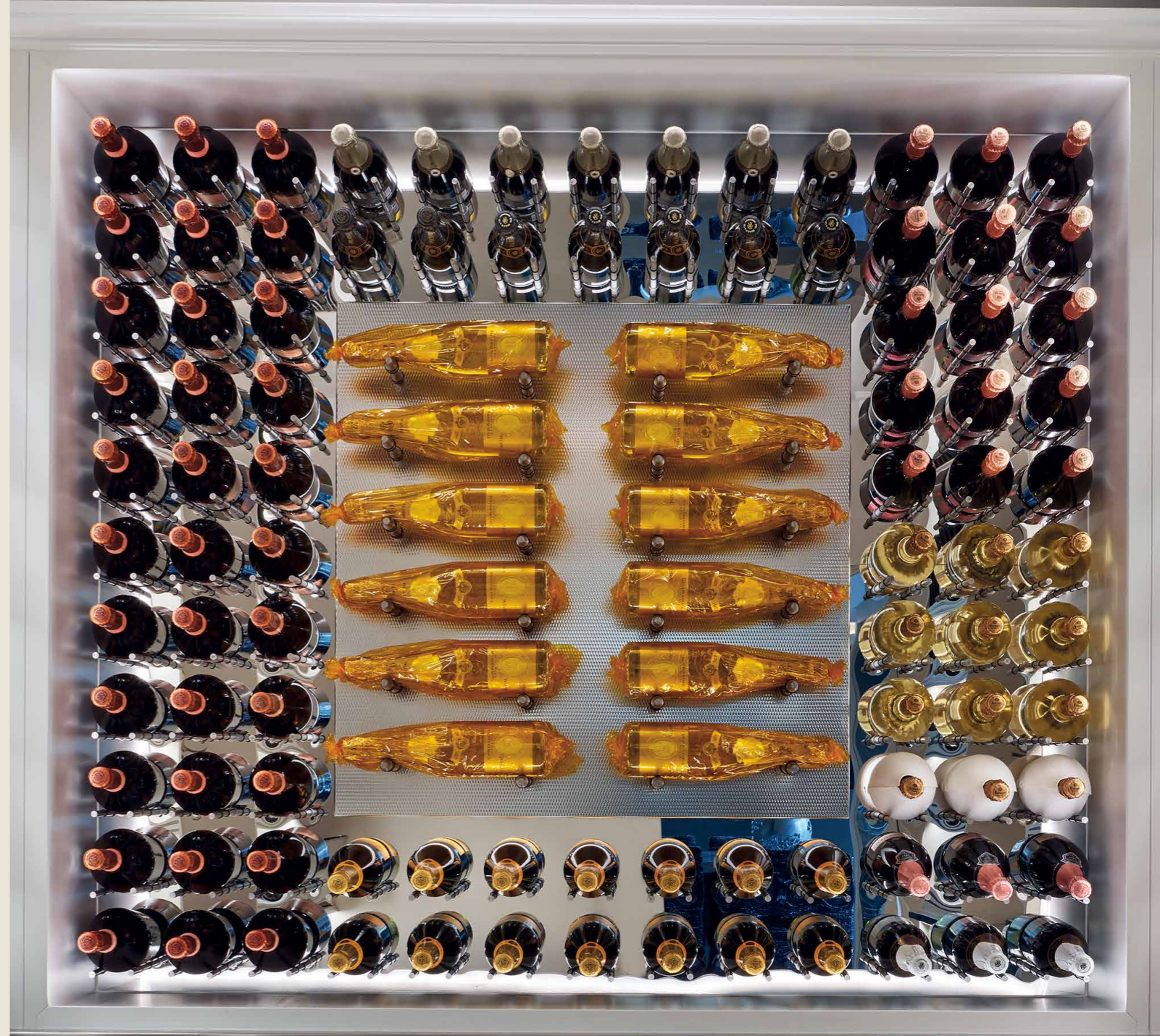
Single bottle deep label-facing pegs in brass or stainless steel



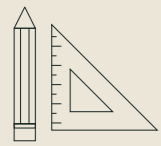
Two bottle deep label-facing pegs in brass or stainless steel



Three bottle deep label-facing pegs in brass or stainless steel



How to design your Ready To Cellar wine space.



Design

- 1. Measure the space**
Start by accurately measuring your space including wall widths and heights. Note and measure the locations of any obstructions like windows, cornices, power sockets. Note: walls may not be straight so measure in several places and at several heights. Measure around any obstructions and if any measurements are inconsistent work to the shortest.
- 2. Design each wall**
Once you have defined the edges of your space and allowed for any obstructions you can fully design each wall, adjusting the sizes and types of panel as you go until you have the design that fits your needs.
- 3. Send it to us**
Send us your design, accurate space measurements, your proposed configuration and your estimated list of components (items and quantities). A member of our team will then check it and take your order.

Need help designing your wine room?

For a small fee we can design the best wine space for your needs and space using components from the Ready to Cellar Collection.

To use the design service, we require floor plans, photographs and accurate height, width and depth measurements of your space along with details of any obstructions.

Climate Control

Wine rooms and walls can be ambient or climate conditioned. If you'd like to include climate conditioning within your Ready To Cellar wine space, our in-house climate control experts will be delighted to help (see page 54).



Ordering, Delivery & Installation.



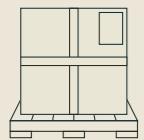
Order

1. Review the Ready to Cellar Collection catalogue pages on pages 22-49.
2. Make a note of the item types, sizes, finishes and quantities that your project requires, together with their respective item codes.
3. Use this information to fill out the order form on our website.
4. Call or email one of our Customer Advisors who will be able to confirm lead times and advise on shipping costs. Provided you have accurate space measurements, they can also check that your selection will fit as intended.



Check

- Once you place your order, we will check it against your room measurements before processing your order.
- In order to do this, we will need accurate measurements of the proposed wine space location (height, width, depth).



Delivery

- We ship worldwide. Please state delivery country and address when placing your order.
- Delivery of your Ready To Cellar components order is a kerbside, palletted delivery.
- You will need to arrange for your own installation team to carry the materials from the delivery point.



Self-install

- We'll deliver your Ready To Cellar order with detailed installation instructions.
- You'll need to arrange your own installation labour to both prepare the space and to install & fit the components.
- We do not install Ready to Cellar Collection components.

List of components.

Label Facing Peg Panels

Standard Symmetrical Panels

Componet Size: Height: 838mm Width: 838mm Depth: 126mm (1 deep), 226mm (2 deep), 326mm (3 deep)	Fixings: 3 pairs 700mm Z-Clips (+ screws for clip to panel) Supplied with Pegs, nuts and washers for the pegs
---	--

1 Bottle Deep Bottle Capacity: 12



Panel Finish	Peg Finish	Unladen weight (kg)	Laden weight (kg)	Item Code	Price (Net of VAT)
Oak	Stainless steel	17	41	LFPP-STD-SYM-838x838-O-SS-1D	£611
Oak	Brass	17	41	LFPP-STD-SYM-838x838-O-B-1D	£649
Walnut	Stainless steel	17	41	LFPP-STD-SYM-838x838-W-SS-1D	£631
Walnut	Brass	17	41	LFPP-STD-SYM-838x838-W-B-1D	£670
Dark Stained Oak	Stainless steel	17	41	LFPP-STD-SYM-838x838-DO-SS-1D	£629
Dark Stained Oak	Brass	17	41	LFPP-STD-SYM-838x838-DO-B-1D	£667
Spray to RAL colour	Stainless steel	17	41	LFPP-STD-SYM-838x838-RAL-SS-1D	£570
Spray to RAL colour	Brass	17	41	LFPP-STD-SYM-838x838-RAL-B-1D	£609
Textured Stainless Steel	Stainless steel	22	46	LFPP-STD-SYM-838x838-RSS-SS-1D	£662
Textured Stainless Steel	Brass	22	46	LFPP-STD-SYM-838x838-RSS-B-1D	£700
Textured Brass	Stainless steel	22	46	LFPP-STD-SYM-838x838-RTB-SS-1D	£770
Textured Brass	Brass	22	46	LFPP-STD-SYM-838x838-RTB-B-1D	£808

2 Bottles Deep Bottle Capacity: 24



Panel Finish	Peg Finish	Unladen weight (kg)	Laden weight (kg)	Item Code	Price (Net of VAT)
Oak	Stainless steel	22	69	LFPP-STD-SYM-838x838-O-SS-2D	£991
Oak	Brass	22	69	LFPP-STD-SYM-838x838-O-B-2D	£1,074
Walnut	Stainless steel	22	69	LFPP-STD-SYM-838x838-W-SS-2D	£1,011
Walnut	Brass	22	69	LFPP-STD-SYM-838x838-W-B-2D	£1,123
Dark Stained Oak	Stainless steel	22	69	LFPP-STD-SYM-838x838-DO-SS-2D	£1,009
Dark Stained Oak	Brass	22	69	LFPP-STD-SYM-838x838-DO-B-2D	£1,121
Spray to RAL colour	Stainless steel	22	69	LFPP-STD-SYM-838x838-RAL-SS-2D	£951
Spray to RAL colour	Brass	22	69	LFPP-STD-SYM-838x838-RAL-B-2D	£1,062
Textured Stainless Steel	Stainless steel	27	74	LFPP-STD-SYM-838x838-RSS-SS-2D	£1,042
Textured Stainless Steel	Brass	27	74	LFPP-STD-SYM-838x838-RSS-B-2D	£1,154
Textured Brass	Stainless steel	27	74	LFPP-STD-SYM-838x838-RTB-SS-2D	£1,150
Textured Brass	Brass	27	74	LFPP-STD-SYM-838x838-RTB-B-2D	£1,233

3 Bottles Deep Bottle Capacity: 36



Panel Finish	Peg Finish	Unladen weight (kg)	Laden weight (kg)	Item Code	Price (Net of VAT)
Oak	Stainless steel	27	97	LFPP-STD-SYM-838x838-O-SS-3D	£1,371
Oak	Brass	27	97	LFPP-STD-SYM-838x838-O-B-3D	£1,499
Walnut	Stainless steel	27	97	LFPP-STD-SYM-838x838-W-SS-3D	£1,392
Walnut	Brass	27	97	LFPP-STD-SYM-838x838-W-B-3D	£1,548
Dark Stained Oak	Stainless steel	27	97	LFPP-STD-SYM-838x838-DO-SS-3D	£1,389
Dark Stained Oak	Brass	27	97	LFPP-STD-SYM-838x838-DO-B-3D	£1,546
Spray to RAL colour	Stainless steel	27	97	LFPP-STD-SYM-838x838-RAL-SS-3D	£1,331
Spray to RAL colour	Brass	27	97	LFPP-STD-SYM-838x838-RAL-B-3D	£1,487
Textured Stainless Steel	Stainless steel	32	102	LFPP-STD-SYM-838x838-RSS-SS-3D	£1,422
Textured Stainless Steel	Brass	32	102	LFPP-STD-SYM-838x838-RSS-B-3D	£1,578
Textured Brass	Stainless steel	32	102	LFPP-STD-SYM-838x838-RTB-SS-3D	£1,530
Textured Brass	Brass	32	102	LFPP-STD-SYM-838x838-RTB-B-3D	£1,687

Important information about fixing of label and cork facing peg panels

All Ready to Cellar components come with fixings included, except for the screws required to fix the Z Clips to your walls which you must supply yourself. We recommend using countersunk flathead screws to fix the Z clips to your wall as these will ensure the screw lies flush with the surface. Be mindful of the combined weight of the components and the static load of wine when selecting suitable wall fixings.

Note that components must only be attached to structural walls or plasterboard walls with 18mm plywood or MDF under the plasterboard face (marine ply or MRMDf if the space is to be climate controlled). Note that plain plasterboard or cavity stud walls are not secure enough to hold the weight of the components.

Label Facing Peg Panels

Extra Large Symmetrical Panels

Componet Size: Height: 1257mm Width: 838mm Depth: 126mm (1 deep), 226mm (2 deep), 326mm (3 deep)	Fixings: 4 pairs 700mm Z-Clips (+ screws for clip to panel) Supplied with Pegs, nuts and washers for the pegs
--	--

1 Bottle Deep Bottle Capacity: 18



Panel Finish	Peg Finish	Unladen weight (kg)	Laden weight (kg)	Item Code	Price (Net of VAT)
Oak	Stainless steel	25	61	LFPP-XL-SYM-1257x838-O-SS-1D	£882
Oak	Brass	25	61	LFPP-XL-SYM-1257x838-O-B-1D	£940
Walnut	Stainless steel	25	61	LFPP-XL-SYM-1257x838-W-SS-1D	£910
Walnut	Brass	25	61	LFPP-XL-SYM-1257x838-W-B-1D	£968
Dark Stained Oak	Stainless steel	25	61	LFPP-XL-SYM-1257x838-DO-SS-1D	£906
Dark Stained Oak	Brass	25	61	LFPP-XL-SYM-1257x838-DO-B-1D	£964
Spray to RAL colour	Stainless steel	25	61	LFPP-XL-SYM-1257x838-RAL-SS-1D	£827
Spray to RAL colour	Brass	25	61	LFPP-XL-SYM-1257x838-RAL-B-1D	£884
Textured Stainless Steel	Stainless steel	33	68	LFPP-XL-SYM-1257x838-RSS-SS-1D	£944
Textured Stainless Steel	Brass	33	68	LFPP-XL-SYM-1257x838-RSS-B-1D	£1,002
Textured Brass	Stainless steel	33	68	LFPP-XL-SYM-1257x838-RTB-SS-1D	£1,104
Textured Brass	Brass	33	68	LFPP-XL-SYM-1257x838-RTB-B-1D	£1,162

2 Bottles Deep Bottle Capacity: 36



Panel Finish	Peg Finish	Unladen weight (kg)	Laden weight (kg)	Item Code	Price (Net of VAT)
Oak	Stainless steel	33	103	LFPP-XL-SYM-1257x838-O-SS-2D	£1,452
Oak	Brass	33	103	LFPP-XL-SYM-1257x838-O-B-2D	£1,577
Walnut	Stainless steel	33	103	LFPP-XL-SYM-1257x838-W-SS-2D	£1,480
Walnut	Brass	33	103	LFPP-XL-SYM-1257x838-W-B-2D	£1,605
Dark Stained Oak	Stainless steel	33	103	LFPP-XL-SYM-1257x838-DO-SS-2D	£1,477
Dark Stained Oak	Brass	33	103	LFPP-XL-SYM-1257x838-DO-B-2D	£1,601
Spray to RAL colour	Stainless steel	33	103	LFPP-XL-SYM-1257x838-RAL-SS-2D	£1,397
Spray to RAL colour	Brass	33	103	LFPP-XL-SYM-1257x838-RAL-B-2D	£1,522
Textured Stainless Steel	Stainless steel	40	110	LFPP-XL-SYM-1257x838-RSS-SS-2D	£1,514
Textured Stainless Steel	Brass	40	110	LFPP-XL-SYM-1257x838-RSS-B-2D	£1,639
Textured Brass	Stainless steel	40	110	LFPP-XL-SYM-1257x838-RTB-SS-2D	£1,674
Textured Brass	Brass	40	110	LFPP-XL-SYM-1257x838-RTB-B-2D	£1,799

3 Bottles Deep Bottle Capacity: 54



Panel Finish	Peg Finish	Unladen weight (kg)	Laden weight (kg)	Item Code	Price (Net of VAT)
Oak	Stainless steel	40	145	LFPP-XL-SYM-1257x838-O-SS-3D	£2,022
Oak	Brass	40	145	LFPP-XL-SYM-1257x838-O-B-3D	£2,214
Walnut	Stainless steel	40	145	LFPP-XL-SYM-1257x838-W-SS-3D	£2,050
Walnut	Brass	40	145	LFPP-XL-SYM-1257x838-W-B-3D	£2,242
Dark Stained Oak	Stainless steel	40	145	LFPP-XL-SYM-1257x838-DO-SS-3D	£2,047
Dark Stained Oak	Brass	40	145	LFPP-XL-SYM-1257x838-DO-B-3D	£2,239
Spray to RAL colour	Stainless steel	40	145	LFPP-XL-SYM-1257x838-RAL-SS-3D	£1,967
Spray to RAL colour	Brass	40	145	LFPP-XL-SYM-1257x838-RAL-B-3D	£2,159
Textured Stainless Steel	Stainless steel	47	153	LFPP-XL-SYM-1257x838-RSS-SS-3D	£2,084
Textured Stainless Steel	Brass	47	153	LFPP-XL-SYM-1257x838-RSS-B-3D	£2,276
Textured Brass	Stainless steel	47	153	LFPP-XL-SYM-1257x838-RTB-SS-3D	£2,245
Textured Brass	Brass	47	153	LFPP-XL-SYM-1257x838-RTB-B-3D	£2,436

Label Facing Peg Panels

Landscape Symmetrical Panels

Componet Size:	Fixings:
Height: 419mm	2 pairs 700mm Z-Clips (+ screws for clip to panel)
Width: 838mm	Supplied with Pegs, nuts and washers for the pegs
Depth: 126mm (1 deep), 226mm (2 deep), 326mm (3 deep)	

1 Bottle Deep Bottle Capacity: 6



Panel Finish	Peg Finish	Unladen weight (kg)	Laden weight (kg)	Item Code	Price (Net of VAT)
Oak	Stainless steel	9	21	LFPP-LAN-SYM-419x838-O-SS-1D	£328
Oak	Brass	9	21	LFPP-LAN-SYM-419x838-O-B-1D	£347
Walnut	Stainless steel	9	21	LFPP-LAN-SYM-419x838-W-SS-1D	£340
Walnut	Brass	9	21	LFPP-LAN-SYM-419x838-W-B-1D	£359
Dark Stained Oak	Stainless steel	9	21	LFPP-LAN-SYM-419x838-DO-SS-1D	£338
Dark Stained Oak	Brass	9	21	LFPP-LAN-SYM-419x838-DO-B-1D	£357
Spray to RAL colour	Stainless steel	9	21	LFPP-LAN-SYM-419x838-RAL-SS-1D	£304
Spray to RAL colour	Brass	9	21	LFPP-LAN-SYM-419x838-RAL-B-1D	£323
Textured Stainless Steel	Stainless steel	11	23	LFPP-LAN-SYM-419x838-RSS-SS-1D	£368
Textured Stainless Steel	Brass	11	23	LFPP-LAN-SYM-419x838-RSS-B-1D	£387
Textured Brass	Stainless steel	11	23	LFPP-LAN-SYM-419x838-RTB-SS-1D	£424
Textured Brass	Brass	11	23	LFPP-LAN-SYM-419x838-RTB-B-1D	£443

2 Bottles Deep Bottle Capacity: 12



Panel Finish	Peg Finish	Unladen weight (kg)	Laden weight (kg)	Item Code	Price (Net of VAT)
Oak	Stainless steel	11	35	LFPP-LAN-SYM-419x838-O-SS-2D	£518
Oak	Brass	11	35	LFPP-LAN-SYM-419x838-O-B-2D	£559
Walnut	Stainless steel	11	35	LFPP-LAN-SYM-419x838-W-SS-2D	£530
Walnut	Brass	11	35	LFPP-LAN-SYM-419x838-W-B-2D	£571
Dark Stained Oak	Stainless steel	11	35	LFPP-LAN-SYM-419x838-DO-SS-2D	£528
Dark Stained Oak	Brass	11	35	LFPP-LAN-SYM-419x838-DO-B-2D	£570
Spray to RAL colour	Stainless steel	11	35	LFPP-LAN-SYM-419x838-RAL-SS-2D	£494
Spray to RAL colour	Brass	11	35	LFPP-LAN-SYM-419x838-RAL-B-2D	£536
Textured Stainless Steel	Stainless steel	14	37	LFPP-LAN-SYM-419x838-RSS-SS-2D	£558
Textured Stainless Steel	Brass	14	37	LFPP-LAN-SYM-419x838-RSS-B-2D	£599
Textured Brass	Stainless steel	14	37	LFPP-LAN-SYM-419x838-RTB-SS-2D	£614
Textured Brass	Brass	14	37	LFPP-LAN-SYM-419x838-RTB-B-2D	£656

3 Bottles Deep Bottle Capacity: 18



Panel Finish	Peg Finish	Unladen weight (kg)	Laden weight (kg)	Item Code	Price (Net of VAT)
Oak	Stainless steel	14	49	LFPP-LAN-SYM-419x838-O-SS-3D	£708
Oak	Brass	14	49	LFPP-LAN-SYM-419x838-O-B-3D	£772
Walnut	Stainless steel	14	49	LFPP-LAN-SYM-419x838-W-SS-3D	£720
Walnut	Brass	14	49	LFPP-LAN-SYM-419x838-W-B-3D	£798
Dark Stained Oak	Stainless steel	14	49	LFPP-LAN-SYM-419x838-DO-SS-3D	£718
Dark Stained Oak	Brass	14	49	LFPP-LAN-SYM-419x838-DO-B-3D	£797
Spray to RAL colour	Stainless steel	14	49	LFPP-LAN-SYM-419x838-RAL-SS-3D	£684
Spray to RAL colour	Brass	14	49	LFPP-LAN-SYM-419x838-RAL-B-3D	£763
Textured Stainless Steel	Stainless steel	16	51	LFPP-LAN-SYM-419x838-RSS-SS-3D	£748
Textured Stainless Steel	Brass	16	51	LFPP-LAN-SYM-419x838-RSS-B-3D	£826
Textured Brass	Stainless steel	16	51	LFPP-LAN-SYM-419x838-RTB-SS-3D	£804
Textured Brass	Brass	16	51	LFPP-LAN-SYM-419x838-RTB-B-3D	£883

Label Facing Peg Panels

Standard Corks LEFT Panels

Componet Size:	Fixings:
Height: 838mm	3 pairs 700mm Z-Clips (+ screws for clip to panel)
Width: 838mm	Supplied with Pegs, nuts and washers for the pegs
Depth: 126mm (1 deep), 226mm (2 deep), 326mm (3 deep)	

1 Bottle Deep Bottle Capacity: 12



Panel Finish	Peg Finish	Unladen weight (kg)	Laden weight (kg)	Item Code	Price (Net of VAT)
Oak	Stainless steel	17	41	LFPP-STD-CL-838x838-O-SS-1D	£611
Oak	Brass	17	41	LFPP-STD-CL-838x838-O-B-1D	£649
Walnut	Stainless steel	17	41	LFPP-STD-CL-838x838-W-SS-1D	£631
Walnut	Brass	17	41	LFPP-STD-CL-838x838-W-B-1D	£670
Dark Stained Oak	Stainless steel	17	41	LFPP-STD-CL-838x838-DO-SS-1D	£629
Dark Stained Oak	Brass	17	41	LFPP-STD-CL-838x838-DO-B-1D	£667
Spray to RAL colour	Stainless steel	17	41	LFPP-STD-CL-838x838-RAL-SS-1D	£570
Spray to RAL colour	Brass	17	41	LFPP-STD-CL-838x838-RAL-B-1D	£609
Textured Stainless Steel	Stainless steel	22	46	LFPP-STD-CL-838x838-RSS-SS-1D	£662
Textured Stainless Steel	Brass	22	46	LFPP-STD-CL-838x838-RSS-B-1D	£700
Textured Brass	Stainless steel	22	46	LFPP-STD-CL-838x838-RTB-SS-1D	£770
Textured Brass	Brass	22	46	LFPP-STD-CL-838x838-RTB-B-1D	£808

2 Bottles Deep Bottle Capacity: 24



Panel Finish	Peg Finish	Unladen weight (kg)	Laden weight (kg)	Item Code	Price (Net of VAT)
Oak	Stainless steel	22	69	LFPP-STD-CL-838x838-O-SS-2D	£991
Oak	Brass	22	69	LFPP-STD-CL-838x838-O-B-2D	£1,074
Walnut	Stainless steel	22	69	LFPP-STD-CL-838x838-W-SS-2D	£1,011
Walnut	Brass	22	69	LFPP-STD-CL-838x838-W-B-2D	£1,123
Dark Stained Oak	Stainless steel	22	69	LFPP-STD-CL-838x838-DO-SS-2D	£1,009
Dark Stained Oak	Brass	22	69	LFPP-STD-CL-838x838-DO-B-2D	£1,121
Spray to RAL colour	Stainless steel	22	69	LFPP-STD-CL-838x838-RAL-SS-2D	£951
Spray to RAL colour	Brass	22	69	LFPP-STD-CL-838x838-RAL-B-2D	£1,062
Textured Stainless Steel	Stainless steel	27	74	LFPP-STD-CL-838x838-RSS-SS-2D	£1,042
Textured Stainless Steel	Brass	27	74	LFPP-STD-CL-838x838-RSS-B-2D	£1,154
Textured Brass	Stainless steel	27	74	LFPP-STD-CL-838x838-RTB-SS-2D	£1,150
Textured Brass	Brass	27	74	LFPP-STD-CL-838x838-RTB-B-2D	£1,233

3 Bottles Deep Bottle Capacity: 36



Panel Finish	Peg Finish	Unladen weight (kg)	Laden weight (kg)	Item Code	Price (Net of VAT)
Oak	Stainless steel	27	97	LFPP-STD-CL-838x838-O-SS-3D	£1,371
Oak	Brass	27	97	LFPP-STD-CL-838x838-O-B-3D	£1,499
Walnut	Stainless steel	27	97	LFPP-STD-CL-838x838-W-SS-3D	£1,392
Walnut	Brass	27	97	LFPP-STD-CL-838x838-W-B-3D	£1,548
Dark Stained Oak	Stainless steel	27	97	LFPP-STD-CL-838x838-DO-SS-3D	£1,389
Dark Stained Oak	Brass	27	97	LFPP-STD-CL-838x838-DO-B-3D	£1,546
Spray to RAL colour	Stainless steel	27	97	LFPP-STD-CL-838x838-RAL-SS-3D	£1,331
Spray to RAL colour	Brass	27	97	LFPP-STD-CL-838x838-RAL-B-3D	£1,487
Textured Stainless Steel	Stainless steel	32	102	LFPP-STD-CL-838x838-RSS-SS-3D	£1,422
Textured Stainless Steel	Brass	32	102	LFPP-STD-CL-838x838-RSS-B-3D	£1,578
Textured Brass	Stainless steel	32	102	LFPP-STD-CL-838x838-RTB-SS-3D	£1,530
Textured Brass	Brass	32	102	LFPP-STD-CL-838x838-RTB-B-3D	£1,687

Label Facing Peg Panels

Extra Large Corks LEFT Panels

Componet Size: Height: 1257mm Width: 838mm Depth: 126mm (1 deep), 226mm (2 deep), 326mm (3 deep)	Fixings: 4 pairs 700mm Z-Clips (+ screws for clip to panel) Supplied with Pegs, nuts and washers for the pegs
--	--

1 Bottle Deep Bottle Capacity: 18

Panel Finish	Peg Finish	Unladen weight (kg)	Laden weight (kg)	Item Code	Price (Net of VAT)
Oak	Stainless steel	25	61	LFPP-XL-CL-1257x838-O-SS-1D	£882
Oak	Brass	25	61	LFPP-XL-CL-1257x838-O-B-1D	£940
Walnut	Stainless steel	25	61	LFPP-XL-CL-1257x838-W-SS-1D	£910
Walnut	Brass	25	61	LFPP-XL-CL-1257x838-W-B-1D	£968
Dark Stained Oak	Stainless steel	25	61	LFPP-XL-CL-1257x838-DO-SS-1D	£906
Dark Stained Oak	Brass	25	61	LFPP-XL-CL-1257x838-DO-B-1D	£964
Spray to RAL colour	Stainless steel	25	61	LFPP-XL-CL-1257x838-RAL-SS-1D	£827
Spray to RAL colour	Brass	25	61	LFPP-XL-CL-1257x838-RAL-B-1D	£884
Textured Stainless Steel	Stainless steel	33	68	LFPP-XL-CL-1257x838-RSS-SS-1D	£944
Textured Stainless Steel	Brass	33	68	LFPP-XL-CL-1257x838-RSS-B-1D	£1,002
Textured Brass	Stainless steel	33	68	LFPP-XL-CL-1257x838-RTB-SS-1D	£1,104
Textured Brass	Brass	33	68	LFPP-XL-CL-1257x838-RTB-B-1D	£1,162



2 Bottles Deep Bottle Capacity: 36

Panel Finish	Peg Finish	Unladen weight (kg)	Laden weight (kg)	Item Code	Price (Net of VAT)
Oak	Stainless steel	33	103	LFPP-XL-CL-1257x838-O-SS-2D	£1,452
Oak	Brass	33	103	LFPP-XL-CL-1257x838-O-B-2D	£1,577
Walnut	Stainless steel	33	103	LFPP-XL-CL-1257x838-W-SS-2D	£1,480
Walnut	Brass	33	103	LFPP-XL-CL-1257x838-W-B-2D	£1,648
Dark Stained Oak	Stainless steel	33	103	LFPP-XL-CL-1257x838-DO-SS-2D	£1,477
Dark Stained Oak	Brass	33	103	LFPP-XL-CL-1257x838-DO-B-2D	£1,645
Spray to RAL colour	Stainless steel	33	103	LFPP-XL-CL-1257x838-RAL-SS-2D	£1,397
Spray to RAL colour	Brass	33	103	LFPP-XL-CL-1257x838-RAL-B-2D	£1,565
Textured Stainless Steel	Stainless steel	40	110	LFPP-XL-CL-1257x838-RSS-SS-2D	£1,514
Textured Stainless Steel	Brass	40	110	LFPP-XL-CL-1257x838-RSS-B-2D	£1,682
Textured Brass	Stainless steel	40	110	LFPP-XL-CL-1257x838-RTB-SS-2D	£1,674
Textured Brass	Brass	40	110	LFPP-XL-CL-1257x838-RTB-B-2D	£1,799



3 Bottles Deep Bottle Capacity: 54

Panel Finish	Peg Finish	Unladen weight (kg)	Laden weight (kg)	Item Code	Price (Net of VAT)
Oak	Stainless steel	40	145	LFPP-XL-CL-1257x838-O-SS-3D	£2,022
Oak	Brass	40	145	LFPP-XL-CL-1257x838-O-B-3D	£2,214
Walnut	Stainless steel	40	145	LFPP-XL-CL-1257x838-W-SS-3D	£2,050
Walnut	Brass	40	145	LFPP-XL-CL-1257x838-W-B-3D	£2,285
Dark Stained Oak	Stainless steel	40	145	LFPP-XL-CL-1257x838-DO-SS-3D	£2,047
Dark Stained Oak	Brass	40	145	LFPP-XL-CL-1257x838-DO-B-3D	£2,282
Spray to RAL colour	Stainless steel	40	145	LFPP-XL-CL-1257x838-RAL-SS-3D	£1,967
Spray to RAL colour	Brass	40	145	LFPP-XL-CL-1257x838-RAL-B-3D	£2,202
Textured Stainless Steel	Stainless steel	47	153	LFPP-XL-CL-1257x838-RSS-SS-3D	£2,084
Textured Stainless Steel	Brass	47	153	LFPP-XL-CL-1257x838-RSS-B-3D	£2,319
Textured Brass	Stainless steel	47	153	LFPP-XL-CL-1257x838-RTB-SS-3D	£2,245
Textured Brass	Brass	47	153	LFPP-XL-CL-1257x838-RTB-B-3D	£2,436



Label Facing Peg Panels

Landscape Corks LEFT Panels

Componet Size: Height: 419mm Width: 838mm Depth: 126mm (1 deep), 226mm (2 deep), 326mm (3 deep)	Fixings: 2 pairs 700mm Z-Clips (+ screws for clip to panel) Supplied with Pegs, nuts and washers for the pegs
---	--

1 Bottle Deep Bottle Capacity: 6

Panel Finish	Peg Finish	Unladen weight (kg)	Laden weight (kg)	Item Code	Price (Net of VAT)
Oak	Stainless steel	9	21	LFPP-LAN-CL-419x838-O-SS-1D	£328
Oak	Brass	9	21	LFPP-LAN-CL-419x838-O-B-1D	£347
Walnut	Stainless steel	9	21	LFPP-LAN-CL-419x838-W-SS-1D	£340
Walnut	Brass	9	21	LFPP-LAN-CL-419x838-W-B-1D	£359
Dark Stained Oak	Stainless steel	9	21	LFPP-LAN-CL-419x838-DO-SS-1D	£338
Dark Stained Oak	Brass	9	21	LFPP-LAN-CL-419x838-DO-B-1D	£357
Spray to RAL colour	Stainless steel	9	21	LFPP-LAN-CL-419x838-RAL-SS-1D	£304
Spray to RAL colour	Brass	9	21	LFPP-LAN-CL-419x838-RAL-B-1D	£323
Textured Stainless Steel	Stainless steel	11	23	LFPP-LAN-CL-419x838-RSS-SS-1D	£368
Textured Stainless Steel	Brass	11	23	LFPP-LAN-CL-419x838-RSS-B-1D	£387
Textured Brass	Stainless steel	11	23	LFPP-LAN-CL-419x838-RTB-SS-1D	£424
Textured Brass	Brass	11	23	LFPP-LAN-CL-419x838-RTB-B-1D	£443



2 Bottles Deep Bottle Capacity: 12

Panel Finish	Peg Finish	Unladen weight (kg)	Laden weight (kg)	Item Code	Price (Net of VAT)
Oak	Stainless steel	11	35	LFPP-LAN-CL-419x838-O-SS-2D	£518
Oak	Brass	11	35	LFPP-LAN-CL-419x838-O-B-2D	£559
Walnut	Stainless steel	11	35	LFPP-LAN-CL-419x838-W-SS-2D	£530
Walnut	Brass	11	35	LFPP-LAN-CL-419x838-W-B-2D	£571
Dark Stained Oak	Stainless steel	11	35	LFPP-LAN-CL-419x838-DO-SS-2D	£528
Dark Stained Oak	Brass	11	35	LFPP-LAN-CL-419x838-DO-B-2D	£570
Spray to RAL colour	Stainless steel	11	35	LFPP-LAN-CL-419x838-RAL-SS-2D	£494
Spray to RAL colour	Brass	11	35	LFPP-LAN-CL-419x838-RAL-B-2D	£536
Textured Stainless Steel	Stainless steel	14	37	LFPP-LAN-CL-419x838-RSS-SS-2D	£761
Textured Stainless Steel	Brass	14	37	LFPP-LAN-CL-419x838-RSS-B-2D	£802
Textured Brass	Stainless steel	14	37	LFPP-LAN-CL-419x838-RTB-SS-2D	£614
Textured Brass	Brass	14	37	LFPP-LAN-CL-419x838-RTB-B-2D	£666



3 Bottles Deep Bottle Capacity: 18

Panel Finish	Peg Finish	Unladen weight (kg)	Laden weight (kg)	Item Code	Price (Net of VAT)
Oak	Stainless steel	14	49	LFPP-LAN-CL-419x838-O-SS-3D	£708
Oak	Brass	14	49	LFPP-LAN-CL-419x838-O-B-3D	£772
Walnut	Stainless steel	14	49	LFPP-LAN-CL-419x838-W-SS-3D	£720
Walnut	Brass	14	49	LFPP-LAN-CL-419x838-W-B-3D	£784
Dark Stained Oak	Stainless steel	14	49	LFPP-LAN-CL-419x838-DO-SS-3D	£718
Dark Stained Oak	Brass	14	49	LFPP-LAN-CL-419x838-DO-B-3D	£782
Spray to RAL colour	Stainless steel	14	49	LFPP-LAN-CL-419x838-RAL-SS-3D	£684
Spray to RAL colour	Brass	14	49	LFPP-LAN-CL-419x838-RAL-B-3D	£748
Textured Stainless Steel	Stainless steel	16	51	LFPP-LAN-CL-419x838-RSS-SS-3D	£748
Textured Stainless Steel	Brass	16	51	LFPP-LAN-CL-419x838-RSS-B-3D	£812
Textured Brass	Stainless steel	16	51	LFPP-LAN-CL-419x838-RTB-SS-3D	£804
Textured Brass	Brass	16	51	LFPP-LAN-CL-419x838-RTB-B-3D	£868



Label Facing Peg Panels

Portrait Corks LEFT Panels

Componet Size:	Fixings:
Height: 838mm	3 pairs 300mm Z-Clips (+ screws for clip to panel)
Width: 419mm	Supplied with Pegs, nuts and washers for the pegs
Depth: 126mm (1 deep), 226mm (2 deep), 326mm (3 deep)	

1 Bottle Deep Bottle Capacity: 6



Panel Finish	Peg Finish	Unladen weight (kg)	Laden weight (kg)	Item Code	Price (Net of VAT)
Oak	Stainless steel	8	20	LFPP-POR-CL-838x419-O-SS-1D	£358
Oak	Brass	8	20	LFPP-POR-CL-838x419-O-B-1D	£377
Walnut	Stainless steel	8	20	LFPP-POR-CL-838x419-W-SS-1D	£370
Walnut	Brass	8	20	LFPP-POR-CL-838x419-W-B-1D	£389
Dark Stained Oak	Stainless steel	8	20	LFPP-POR-CL-838x419-DO-SS-1D	£368
Dark Stained Oak	Brass	8	20	LFPP-POR-CL-838x419-DO-B-1D	£387
Spray to RAL colour	Stainless steel	8	20	LFPP-POR-CL-838x419-RAL-SS-1D	£334
Spray to RAL colour	Brass	8	20	LFPP-POR-CL-838x419-RAL-B-1D	£353
Textured Stainless Steel	Stainless steel	11	23	LFPP-POR-CL-838x419-RSS-SS-1D	£398
Textured Stainless Steel	Brass	11	23	LFPP-POR-CL-838x419-RSS-B-1D	£417
Textured Brass	Stainless steel	11	23	LFPP-POR-CL-838x419-RTB-SS-1D	£454
Textured Brass	Brass	11	23	LFPP-POR-CL-838x419-RTB-B-1D	£473

2 Bottles Deep Bottle Capacity: 12



Panel Finish	Peg Finish	Unladen weight (kg)	Laden weight (kg)	Item Code	Price (Net of VAT)
Oak	Stainless steel	11	34	LFPP-POR-CL-838x419-O-SS-2D	£548
Oak	Brass	11	34	LFPP-POR-CL-838x419-O-B-2D	£589
Walnut	Stainless steel	11	34	LFPP-POR-CL-838x419-W-SS-2D	£560
Walnut	Brass	11	34	LFPP-POR-CL-838x419-W-B-2D	£601
Dark Stained Oak	Stainless steel	11	34	LFPP-POR-CL-838x419-DO-SS-2D	£558
Dark Stained Oak	Brass	11	34	LFPP-POR-CL-838x419-DO-B-2D	£600
Spray to RAL colour	Stainless steel	11	34	LFPP-POR-CL-838x419-RAL-SS-2D	£524
Spray to RAL colour	Brass	11	34	LFPP-POR-CL-838x419-RAL-B-2D	£566
Textured Stainless Steel	Stainless steel	13	37	LFPP-POR-CL-838x419-RSS-SS-2D	£588
Textured Stainless Steel	Brass	13	37	LFPP-POR-CL-838x419-RSS-B-2D	£630
Textured Brass	Stainless steel	13	37	LFPP-POR-CL-838x419-RTB-SS-2D	£644
Textured Brass	Brass	13	37	LFPP-POR-CL-838x419-RTB-B-2D	£686

3 Bottles Deep Bottle Capacity: 18



Panel Finish	Peg Finish	Unladen weight (kg)	Laden weight (kg)	Item Code	Price (Net of VAT)
Oak	Stainless steel	13	48	LFPP-POR-CL-838x419-O-SS-3D	£738
Oak	Brass	13	48	LFPP-POR-CL-838x419-O-B-3D	£802
Walnut	Stainless steel	13	48	LFPP-POR-CL-838x419-W-SS-3D	£750
Walnut	Brass	13	48	LFPP-POR-CL-838x419-W-B-3D	£814
Dark Stained Oak	Stainless steel	13	48	LFPP-POR-CL-838x419-DO-SS-3D	£748
Dark Stained Oak	Brass	13	48	LFPP-POR-CL-838x419-DO-B-3D	£812
Spray to RAL colour	Stainless steel	13	48	LFPP-POR-CL-838x419-RAL-SS-3D	£714
Spray to RAL colour	Brass	13	48	LFPP-POR-CL-838x419-RAL-B-3D	£778
Textured Stainless Steel	Stainless steel	16	51	LFPP-POR-CL-838x419-RSS-SS-3D	£778
Textured Stainless Steel	Brass	16	51	LFPP-POR-CL-838x419-RSS-B-3D	£842
Textured Brass	Stainless steel	16	51	LFPP-POR-CL-838x419-RTB-SS-3D	£834
Textured Brass	Brass	16	51	LFPP-POR-CL-838x419-RTB-B-3D	£898

Label Facing Peg Panels

Tall Corks LEFT Panels

Componet Size:	Fixings:
Height: 1257mm	4 pairs 300mm Z-Clips (+ screws for clip to panel)
Width: 419mm	Supplied with Pegs, nuts and washers for the pegs
Depth: 126mm (1 deep), 226mm (2 deep), 326mm (3 deep)	

1 Bottle Deep Bottle Capacity: 9



Panel Finish	Peg Finish	Unladen weight (kg)	Laden weight (kg)	Item Code	Price (Net of VAT)
Oak	Stainless steel	12	30	LFPP-TAL-CL-1257x419-O-SS-1D	£405
Oak	Brass	12	30	LFPP-TAL-CL-1257x419-O-B-1D	£425
Walnut	Stainless steel	12	30	LFPP-TAL-CL-1257x419-W-SS-1D	£421
Walnut	Brass	12	30	LFPP-TAL-CL-1257x419-W-B-1D	£441
Dark Stained Oak	Stainless steel	12	30	LFPP-TAL-CL-1257x419-DO-SS-1D	£419
Dark Stained Oak	Brass	12	30	LFPP-TAL-CL-1257x419-DO-B-1D	£439
Spray to RAL colour	Stainless steel	12	30	LFPP-TAL-CL-1257x419-RAL-SS-1D	£373
Spray to RAL colour	Brass	12	30	LFPP-TAL-CL-1257x419-RAL-B-1D	£393
Textured Stainless Steel	Stainless steel	16	34	LFPP-TAL-CL-1257x419-RSS-SS-1D	£452
Textured Stainless Steel	Brass	16	34	LFPP-TAL-CL-1257x419-RSS-B-1D	£472
Textured Brass	Stainless steel	16	34	LFPP-TAL-CL-1257x419-RTB-SS-1D	£536
Textured Brass	Brass	16	34	LFPP-TAL-CL-1257x419-RTB-B-1D	£555

2 Bottles Deep Bottle Capacity: 18



Panel Finish	Peg Finish	Unladen weight (kg)	Laden weight (kg)	Item Code	Price (Net of VAT)
Oak	Stainless steel	16	51	LFPP-TAL-CL-1257x419-O-SS-2D	£595
Oak	Brass	16	51	LFPP-TAL-CL-1257x419-O-B-2D	£637
Walnut	Stainless steel	16	51	LFPP-TAL-CL-1257x419-W-SS-2D	£611
Walnut	Brass	16	51	LFPP-TAL-CL-1257x419-W-B-2D	£653
Dark Stained Oak	Stainless steel	16	51	LFPP-TAL-CL-1257x419-DO-SS-2D	£609
Dark Stained Oak	Brass	16	51	LFPP-TAL-CL-1257x419-DO-B-2D	£651
Spray to RAL colour	Stainless steel	16	51	LFPP-TAL-CL-1257x419-RAL-SS-2D	£563
Spray to RAL colour	Brass	16	51	LFPP-TAL-CL-1257x419-RAL-B-2D	£605
Textured Stainless Steel	Stainless steel	20	55	LFPP-TAL-CL-1257x419-RSS-SS-2D	£642
Textured Stainless Steel	Brass	20	55	LFPP-TAL-CL-1257x419-RSS-B-2D	£684
Textured Brass	Stainless steel	20	55	LFPP-TAL-CL-1257x419-RTB-SS-2D	£726
Textured Brass	Brass	20	55	LFPP-TAL-CL-1257x419-RTB-B-2D	£767

3 Bottles Deep Bottle Capacity: 27



Panel Finish	Peg Finish	Unladen weight (kg)	Laden weight (kg)	Item Code	Price (Net of VAT)
Oak	Stainless steel	20	72	LFPP-TAL-CL-1257x419-O-SS-3D	£785
Oak	Brass	20	72	LFPP-TAL-CL-1257x419-O-B-3D	£849
Walnut	Stainless steel	20	72	LFPP-TAL-CL-1257x419-W-SS-3D	£802
Walnut	Brass	20	72	LFPP-TAL-CL-1257x419-W-B-3D	£865
Dark Stained Oak	Stainless steel	20	72	LFPP-TAL-CL-1257x419-DO-SS-3D	£800
Dark Stained Oak	Brass	20	72	LFPP-TAL-CL-1257x419-DO-B-3D	£863
Spray to RAL colour	Stainless steel	20	72	LFPP-TAL-CL-1257x419-RAL-SS-3D	£754
Spray to RAL colour	Brass	20	72	LFPP-TAL-CL-1257x419-RAL-B-3D	£817
Textured Stainless Steel	Stainless steel	23	76	LFPP-TAL-CL-1257x419-RSS-SS-3D	£833
Textured Stainless Steel	Brass	23	76	LFPP-TAL-CL-1257x419-RSS-B-3D	£896
Textured Brass	Stainless steel	23	76	LFPP-TAL-CL-1257x419-RTB-SS-3D	£916
Textured Brass	Brass	23	76	LFPP-TAL-CL-1257x419-RTB-B-3D	£980

Label Facing Peg Panels

Small Square Corks LEFT Panels

Componet Size:	Fixings:
Height: 419mm	2 pairs 300mm Z-Clips (+ screws for clip to panel)
Width: 419mm	Supplied with Pegs, nuts and washers for the pegs
Depth: 126mm (1 deep), 226mm (2 deep), 326mm (3 deep)	

1 Bottle Deep Bottle Capacity: 3



Panel Finish	Peg Finish	Unladen weight (kg)	Laden weight (kg)	Item Code	Price (Net of VAT)
Oak	Stainless steel	4	10	LFPP-SSQ-CL-419x419-O-SS-1D	£206
Oak	Brass	4	10	LFPP-SSQ-CL-419x419-O-B-1D	£215
Walnut	Stainless steel	4	10	LFPP-SSQ-CL-419x419-W-SS-1D	£213
Walnut	Brass	4	10	LFPP-SSQ-CL-419x419-W-B-1D	£223
Dark Stained Oak	Stainless steel	4	10	LFPP-SSQ-CL-419x419-DO-SS-1D	£213
Dark Stained Oak	Brass	4	10	LFPP-SSQ-CL-419x419-DO-B-1D	£222
Spray to RAL colour	Stainless steel	4	10	LFPP-SSQ-CL-419x419-RAL-SS-1D	£191
Spray to RAL colour	Brass	4	10	LFPP-SSQ-CL-419x419-RAL-B-1D	£200
Textured Stainless Steel	Stainless steel	6	11	LFPP-SSQ-CL-419x419-RSS-SS-1D	£237
Textured Stainless Steel	Brass	6	11	LFPP-SSQ-CL-419x419-RSS-B-1D	£246
Textured Brass	Stainless steel	6	11	LFPP-SSQ-CL-419x419-RTB-SS-1D	£266
Textured Brass	Brass	6	11	LFPP-SSQ-CL-419x419-RTB-B-1D	£276

2 Bottles Deep Bottle Capacity: 6



Panel Finish	Peg Finish	Unladen weight (kg)	Laden weight (kg)	Item Code	Price (Net of VAT)
Oak	Stainless steel	6	17	LFPP-SSQ-CL-419x419-O-SS-2D	£301
Oak	Brass	6	17	LFPP-SSQ-CL-419x419-O-B-2D	£322
Walnut	Stainless steel	6	17	LFPP-SSQ-CL-419x419-W-SS-2D	£309
Walnut	Brass	6	17	LFPP-SSQ-CL-419x419-W-B-2D	£329
Dark Stained Oak	Stainless steel	6	17	LFPP-SSQ-CL-419x419-DO-SS-2D	£308
Dark Stained Oak	Brass	6	17	LFPP-SSQ-CL-419x419-DO-B-2D	£328
Spray to RAL colour	Stainless steel	6	17	LFPP-SSQ-CL-419x419-RAL-SS-2D	£286
Spray to RAL colour	Brass	6	17	LFPP-SSQ-CL-419x419-RAL-B-2D	£306
Textured Stainless Steel	Stainless steel	7	19	LFPP-SSQ-CL-419x419-RSS-SS-2D	£332
Textured Stainless Steel	Brass	7	19	LFPP-SSQ-CL-419x419-RSS-B-2D	£352
Textured Brass	Stainless steel	7	19	LFPP-SSQ-CL-419x419-RTB-SS-2D	£361
Textured Brass	Brass	7	19	LFPP-SSQ-CL-419x419-RTB-B-2D	£382

3 Bottles Deep Bottle Capacity: 9



Panel Finish	Peg Finish	Unladen weight (kg)	Laden weight (kg)	Item Code	Price (Net of VAT)
Oak	Stainless steel	7	24	LFPP-SSQ-CL-419x419-O-SS-3D	£396
Oak	Brass	7	24	LFPP-SSQ-CL-419x419-O-B-3D	£428
Walnut	Stainless steel	7	24	LFPP-SSQ-CL-419x419-W-SS-3D	£404
Walnut	Brass	7	24	LFPP-SSQ-CL-419x419-W-B-3D	£436
Dark Stained Oak	Stainless steel	7	24	LFPP-SSQ-CL-419x419-DO-SS-3D	£403
Dark Stained Oak	Brass	7	24	LFPP-SSQ-CL-419x419-DO-B-3D	£435
Spray to RAL colour	Stainless steel	7	24	LFPP-SSQ-CL-419x419-RAL-SS-3D	£381
Spray to RAL colour	Brass	7	24	LFPP-SSQ-CL-419x419-RAL-B-3D	£413
Textured Stainless Steel	Stainless steel	8	26	LFPP-SSQ-CL-419x419-RSS-SS-3D	£427
Textured Stainless Steel	Brass	8	26	LFPP-SSQ-CL-419x419-RSS-B-3D	£459
Textured Brass	Stainless steel	8	26	LFPP-SSQ-CL-419x419-RTB-SS-3D	£456
Textured Brass	Brass	8	26	LFPP-SSQ-CL-419x419-RTB-B-3D	£488

Label Facing Peg Panels

Standard Corks RIGHT Panels

Componet Size:	Fixings:
Height: 838mm	3 pairs 700mm Z-Clips (+ screws for clip to panel)
Width: 838mm	Supplied with Pegs, nuts and washers for the pegs
Depth: 126mm (1 deep), 226mm (2 deep), 326mm (3 deep)	

1 Bottle Deep Bottle Capacity: 12



Panel Finish	Peg Finish	Unladen weight (kg)	Laden weight (kg)	Item Code	Price (Net of VAT)
Oak	Stainless steel	17	41	LFPP-STD-CR-838x838-O-SS-1D	£611
Oak	Brass	17	41	LFPP-STD-CR-838x838-O-B-1D	£649
Walnut	Stainless steel	17	41	LFPP-STD-CR-838x838-W-SS-1D	£631
Walnut	Brass	17	41	LFPP-STD-CR-838x838-W-B-1D	£670
Dark Stained Oak	Stainless steel	17	41	LFPP-STD-CR-838x838-DO-SS-1D	£629
Dark Stained Oak	Brass	17	41	LFPP-STD-CR-838x838-DO-B-1D	£667
Spray to RAL colour	Stainless steel	17	41	LFPP-STD-CR-838x838-RAL-SS-1D	£570
Spray to RAL colour	Brass	17	41	LFPP-STD-CR-838x838-RAL-B-1D	£609
Textured Stainless Steel	Stainless steel	22	46	LFPP-STD-CR-838x838-RSS-SS-1D	£662
Textured Stainless Steel	Brass	22	46	LFPP-STD-CR-838x838-RSS-B-1D	£700
Textured Brass	Stainless steel	22	46	LFPP-STD-CR-838x838-RTB-SS-1D	£770
Textured Brass	Brass	22	46	LFPP-STD-CR-838x838-RTB-B-1D	£808

2 Bottles Deep Bottle Capacity: 24



Panel Finish	Peg Finish	Unladen weight (kg)	Laden weight (kg)	Item Code	Price (Net of VAT)
Oak	Stainless steel	22	69	LFPP-STD-CR-838x838-O-SS-2D	£991
Oak	Brass	22	69	LFPP-STD-CR-838x838-O-B-2D	£1,074
Walnut	Stainless steel	22	69	LFPP-STD-CR-838x838-W-SS-2D	£1,011
Walnut	Brass	22	69	LFPP-STD-CR-838x838-W-B-2D	£1,095
Dark Stained Oak	Stainless steel	22	69	LFPP-STD-CR-838x838-DO-SS-2D	£1,009
Dark Stained Oak	Brass	22	69	LFPP-STD-CR-838x838-DO-B-2D	£1,092
Spray to RAL colour	Stainless steel	22	69	LFPP-STD-CR-838x838-RAL-SS-2D	£951
Spray to RAL colour	Brass	22	69	LFPP-STD-CR-838x838-RAL-B-2D	£1,034
Textured Stainless Steel	Stainless steel	27	74	LFPP-STD-CR-838x838-RSS-SS-2D	£1,042
Textured Stainless Steel	Brass	27	74	LFPP-STD-CR-838x838-RSS-B-2D	£1,125
Textured Brass	Stainless steel	27	74	LFPP-STD-CR-838x838-RTB-SS-2D	£1,150
Textured Brass	Brass	27	74	LFPP-STD-CR-838x838-RTB-B-2D	£1,233

3 Bottles Deep Bottle Capacity: 36



Panel Finish	Peg Finish	Unladen weight (kg)	Laden weight (kg)	Item Code	Price (Net of VAT)
Oak	Stainless steel	27	97	LFPP-STD-CR-838x838-O-SS-3D	£1,371
Oak	Brass	27	97	LFPP-STD-CR-838x838-O-B-3D	£1,499
Walnut	Stainless steel	27	97	LFPP-STD-CR-838x838-W-SS-3D	£1,392
Walnut	Brass	27	97	LFPP-STD-CR-838x838-W-B-3D	£1,519
Dark Stained Oak	Stainless steel	27	97	LFPP-STD-CR-838x838-DO-SS-3D	£1,389
Dark Stained Oak	Brass	27	97	LFPP-STD-CR-838x838-DO-B-3D	£1,517
Spray to RAL colour	Stainless steel	27	97	LFPP-STD-CR-838x838-RAL-SS-3D	£1,331
Spray to RAL colour	Brass	27	97	LFPP-STD-CR-838x838-RAL-B-3D	£1,459
Textured Stainless Steel	Stainless steel	32	102	LFPP-STD-CR-838x838-RSS-SS-3D	£1,422
Textured Stainless Steel	Brass	32	102	LFPP-STD-CR-838x838-RSS-B-3D	£1,550
Textured Brass	Stainless steel	32	102	LFPP-STD-CR-838x838-RTB-SS-3D	£1,530
Textured Brass	Brass	32	102	LFPP-STD-CR-838x838-RTB-B-3D	£1,658

Label Facing Peg Panels

Extra Large Corks RIGHT Panels

Componet Size: Height: 1257mm Width: 838mm Depth: 126mm (1 deep), 226mm (2 deep), 326mm (3 deep)	Fixings: 4 pairs 700mm Z-Clips (+ screws for clip to panel) Supplied with Pegs, nuts and washers for the pegs
--	--

1 Bottle Deep Bottle Capacity: 18

Panel Finish	Peg Finish	Unladen weight (kg)	Laden weight (kg)	Item Code	Price (Net of VAT)
Oak	Stainless steel	25	61	LFPP-XL-CR-1257x838-O-SS-1D	£882
Oak	Brass	25	61	LFPP-XL-CR-1257x838-O-B-1D	£940
Walnut	Stainless steel	25	61	LFPP-XL-CR-1257x838-W-SS-1D	£910
Walnut	Brass	25	61	LFPP-XL-CR-1257x838-W-B-1D	£968
Dark Stained Oak	Stainless steel	25	61	LFPP-XL-CR-1257x838-DO-SS-1D	£906
Dark Stained Oak	Brass	25	61	LFPP-XL-CR-1257x838-DO-B-1D	£964
Spray to RAL colour	Stainless steel	25	61	LFPP-XL-CR-1257x838-RAL-SS-1D	£827
Spray to RAL colour	Brass	25	61	LFPP-XL-CR-1257x838-RAL-B-1D	£884
Textured Stainless Steel	Stainless steel	33	68	LFPP-XL-CR-1257x838-RSS-SS-1D	£944
Textured Stainless Steel	Brass	33	68	LFPP-XL-CR-1257x838-RSS-B-1D	£1,002
Textured Brass	Stainless steel	33	68	LFPP-XL-CR-1257x838-RTB-SS-1D	£1,104
Textured Brass	Brass	33	68	LFPP-XL-CR-1257x838-RTB-B-1D	£1,162

2 Bottles Deep Bottle Capacity: 36

Panel Finish	Peg Finish	Unladen weight (kg)	Laden weight (kg)	Item Code	Price (Net of VAT)
Oak	Stainless steel	33	103	LFPP-XL-CR-1257x838-O-SS-2D	£1,452
Oak	Brass	33	103	LFPP-XL-CR-1257x838-O-B-2D	£1,577
Walnut	Stainless steel	33	103	LFPP-XL-CR-1257x838-W-SS-2D	£1,480
Walnut	Brass	33	103	LFPP-XL-CR-1257x838-W-B-2D	£1,605
Dark Stained Oak	Stainless steel	33	103	LFPP-XL-CR-1257x838-DO-SS-2D	£1,477
Dark Stained Oak	Brass	33	103	LFPP-XL-CR-1257x838-DO-B-2D	£1,601
Spray to RAL colour	Stainless steel	33	103	LFPP-XL-CR-1257x838-RAL-SS-2D	£1,397
Spray to RAL colour	Brass	33	103	LFPP-XL-CR-1257x838-RAL-B-2D	£1,522
Textured Stainless Steel	Stainless steel	40	110	LFPP-XL-CR-1257x838-RSS-SS-2D	£1,514
Textured Stainless Steel	Brass	40	110	LFPP-XL-CR-1257x838-RSS-B-2D	£1,639
Textured Brass	Stainless steel	40	110	LFPP-XL-CR-1257x838-RTB-SS-2D	£1,674
Textured Brass	Brass	40	110	LFPP-XL-CR-1257x838-RTB-B-2D	£1,799

3 Bottles Deep Bottle Capacity: 54

Panel Finish	Peg Finish	Unladen weight (kg)	Laden weight (kg)	Item Code	Price (Net of VAT)
Oak	Stainless steel	40	145	LFPP-XL-CR-1257x838-O-SS-3D	£2,022
Oak	Brass	40	145	LFPP-XL-CR-1257x838-O-B-3D	£2,214
Walnut	Stainless steel	40	145	LFPP-XL-CR-1257x838-W-SS-3D	£2,050
Walnut	Brass	40	145	LFPP-XL-CR-1257x838-W-B-3D	£2,242
Dark Stained Oak	Stainless steel	40	145	LFPP-XL-CR-1257x838-DO-SS-3D	£2,047
Dark Stained Oak	Brass	40	145	LFPP-XL-CR-1257x838-DO-B-3D	£2,239
Spray to RAL colour	Stainless steel	40	145	LFPP-XL-CR-1257x838-RAL-SS-3D	£1,967
Spray to RAL colour	Brass	40	145	LFPP-XL-CR-1257x838-RAL-B-3D	£2,159
Textured Stainless Steel	Stainless steel	47	153	LFPP-XL-CR-1257x838-RSS-SS-3D	£2,084
Textured Stainless Steel	Brass	47	153	LFPP-XL-CR-1257x838-RSS-B-3D	£2,276
Textured Brass	Stainless steel	47	153	LFPP-XL-CR-1257x838-RTB-SS-3D	£2,245
Textured Brass	Brass	47	153	LFPP-XL-CR-1257x838-RTB-B-3D	£2,436

Label Facing Peg Panels

Landscape Corks RIGHT Panels

Componet Size: Height: 419mm Width: 838mm Depth: 126mm (1 deep), 226mm (2 deep), 326mm (3 deep)	Fixings: 2 pairs 700mm Z-Clips (+ screws for clip to panel) Supplied with Pegs, nuts and washers for the pegs
---	--

1 Bottle Deep Bottle Capacity: 6

Panel Finish	Peg Finish	Unladen weight (kg)	Laden weight (kg)	Item Code	Price (Net of VAT)
Oak	Stainless steel	9	21	LFPP-LAN-CR-419x838-O-SS-1D	£328
Oak	Brass	9	21	LFPP-LAN-CR-419x838-O-B-1D	£347
Walnut	Stainless steel	9	21	LFPP-LAN-CR-419x838-W-SS-1D	£340
Walnut	Brass	9	21	LFPP-LAN-CR-419x838-W-B-1D	£359
Dark Stained Oak	Stainless steel	9	21	LFPP-LAN-CR-419x838-DO-SS-1D	£338
Dark Stained Oak	Brass	9	21	LFPP-LAN-CR-419x838-DO-B-1D	£357
Spray to RAL colour	Stainless steel	9	21	LFPP-LAN-CR-419x838-RAL-SS-1D	£304
Spray to RAL colour	Brass	9	21	LFPP-LAN-CR-419x838-RAL-B-1D	£323
Textured Stainless Steel	Stainless steel	11	23	LFPP-LAN-CR-419x838-RSS-SS-1D	£368
Textured Stainless Steel	Brass	11	23	LFPP-LAN-CR-419x838-RSS-B-1D	£387
Textured Brass	Stainless steel	11	23	LFPP-LAN-CR-419x838-RTB-SS-1D	£424
Textured Brass	Brass	11	23	LFPP-LAN-CR-419x838-RTB-B-1D	£443

2 Bottles Deep Bottle Capacity: 12

Panel Finish	Peg Finish	Unladen weight (kg)	Laden weight (kg)	Item Code	Price (Net of VAT)
Oak	Stainless steel	11	35	LFPP-LAN-CR-419x838-O-SS-2D	£518
Oak	Brass	11	35	LFPP-LAN-CR-419x838-O-B-2D	£559
Walnut	Stainless steel	11	35	LFPP-LAN-CR-419x838-W-SS-2D	£530
Walnut	Brass	11	35	LFPP-LAN-CR-419x838-W-B-2D	£571
Dark Stained Oak	Stainless steel	11	35	LFPP-LAN-CR-419x838-DO-SS-2D	£528
Dark Stained Oak	Brass	11	35	LFPP-LAN-CR-419x838-DO-B-2D	£570
Spray to RAL colour	Stainless steel	11	35	LFPP-LAN-CR-419x838-RAL-SS-2D	£494
Spray to RAL colour	Brass	11	35	LFPP-LAN-CR-419x838-RAL-B-2D	£536
Textured Stainless Steel	Stainless steel	14	37	LFPP-LAN-CR-419x838-RSS-SS-2D	£558
Textured Stainless Steel	Brass	14	37	LFPP-LAN-CR-419x838-RSS-B-2D	£599
Textured Brass	Stainless steel	14	37	LFPP-LAN-CR-419x838-RTB-SS-2D	£614
Textured Brass	Brass	14	37	LFPP-LAN-CR-419x838-RTB-B-2D	£656

3 Bottles Deep Bottle Capacity: 18

Panel Finish	Peg Finish	Unladen weight (kg)	Laden weight (kg)	Item Code	Price (Net of VAT)
Oak	Stainless steel	14	49	LFPP-LAN-CR-419x838-O-SS-3D	£708
Oak	Brass	14	49	LFPP-LAN-CR-419x838-O-B-3D	£772
Walnut	Stainless steel	14	49	LFPP-LAN-CR-419x838-W-SS-3D	£720
Walnut	Brass	14	49	LFPP-LAN-CR-419x838-W-B-3D	£784
Dark Stained Oak	Stainless steel	14	49	LFPP-LAN-CR-419x838-DO-SS-3D	£718
Dark Stained Oak	Brass	14	49	LFPP-LAN-CR-419x838-DO-B-3D	£782
Spray to RAL colour	Stainless steel	14	49	LFPP-LAN-CR-419x838-RAL-SS-3D	£684
Spray to RAL colour	Brass	14	49	LFPP-LAN-CR-419x838-RAL-B-3D	£748
Textured Stainless Steel	Stainless steel	16	51	LFPP-LAN-CR-419x838-RSS-SS-3D	£748
Textured Stainless Steel	Brass	16	51	LFPP-LAN-CR-419x838-RSS-B-3D	£812
Textured Brass	Stainless steel	16	51	LFPP-LAN-CR-419x838-RTB-SS-3D	£804
Textured Brass	Brass	16	51	LFPP-LAN-CR-419x838-RTB-B-3D	£868

Label Facing Peg Panels

Portrait Corks RIGHT Panels

Componet Size: Height: 838mm Width: 419mm Depth: 126mm (1 deep), 226mm (2 deep), 326mm (3 deep)	Fixings: 3 pairs 300mm Z-Clips (+ screws for clip to panel) Supplied with Pegs, nuts and washers for the pegs
---	--

1 Bottle Deep Bottle Capacity: 6



Panel Finish	Peg Finish	Unladen weight (kg)	Laden weight (kg)	Item Code	Price (Net of VAT)
Oak	Stainless steel	8	20	LFPP-POR-CR-838x419-O-SS-1D	£358
Oak	Brass	8	20	LFPP-POR-CR-838x419-O-B-1D	£377
Walnut	Stainless steel	8	20	LFPP-POR-CR-838x419-W-SS-1D	£368
Walnut	Brass	8	20	LFPP-POR-CR-838x419-W-B-1D	£387
Dark Stained Oak	Stainless steel	8	20	LFPP-POR-CR-838x419-DO-SS-1D	£370
Dark Stained Oak	Brass	8	20	LFPP-POR-CR-838x419-DO-B-1D	£389
Spray to RAL colour	Stainless steel	8	20	LFPP-POR-CR-838x419-RAL-SS-1D	£334
Spray to RAL colour	Brass	8	20	LFPP-POR-CR-838x419-RAL-B-1D	£353
Textured Stainless Steel	Stainless steel	11	23	LFPP-POR-CR-838x419-RSS-SS-1D	£398
Textured Stainless Steel	Brass	11	23	LFPP-POR-CR-838x419-RSS-B-1D	£417
Textured Brass	Stainless steel	11	23	LFPP-POR-CR-838x419-RTB-SS-1D	£454
Textured Brass	Brass	11	23	LFPP-POR-CR-838x419-RTB-B-1D	£473

2 Bottles Deep Bottle Capacity: 12



Panel Finish	Peg Finish	Unladen weight (kg)	Laden weight (kg)	Item Code	Price (Net of VAT)
Oak	Stainless steel	11	34	LFPP-POR-CR-838x419-O-SS-2D	£548
Oak	Brass	11	34	LFPP-POR-CR-838x419-O-B-2D	£589
Walnut	Stainless steel	11	34	LFPP-POR-CR-838x419-W-SS-2D	£558
Walnut	Brass	11	34	LFPP-POR-CR-838x419-W-B-2D	£600
Dark Stained Oak	Stainless steel	11	34	LFPP-POR-CR-838x419-DO-SS-2D	£560
Dark Stained Oak	Brass	11	34	LFPP-POR-CR-838x419-DO-B-2D	£601
Spray to RAL colour	Stainless steel	11	34	LFPP-POR-CR-838x419-RAL-SS-2D	£524
Spray to RAL colour	Brass	11	34	LFPP-POR-CR-838x419-RAL-B-2D	£566
Textured Stainless Steel	Stainless steel	13	37	LFPP-POR-CR-838x419-RSS-SS-2D	£588
Textured Stainless Steel	Brass	13	37	LFPP-POR-CR-838x419-RSS-B-2D	£630
Textured Brass	Stainless steel	13	37	LFPP-POR-CR-838x419-RTB-SS-2D	£644
Textured Brass	Brass	13	37	LFPP-POR-CR-838x419-RTB-B-2D	£686

3 Bottles Deep Bottle Capacity: 18



Panel Finish	Peg Finish	Unladen weight (kg)	Laden weight (kg)	Item Code	Price (Net of VAT)
Oak	Stainless steel	13	48	LFPP-POR-CR-838x419-O-SS-3D	£738
Oak	Brass	13	48	LFPP-POR-CR-838x419-O-B-3D	£802
Walnut	Stainless steel	13	48	LFPP-POR-CR-838x419-W-SS-3D	£748
Walnut	Brass	13	48	LFPP-POR-CR-838x419-W-B-3D	£812
Dark Stained Oak	Stainless steel	13	48	LFPP-POR-CR-838x419-DO-SS-3D	£750
Dark Stained Oak	Brass	13	48	LFPP-POR-CR-838x419-DO-B-3D	£814
Spray to RAL colour	Stainless steel	13	48	LFPP-POR-CR-838x419-RAL-SS-3D	£714
Spray to RAL colour	Brass	13	48	LFPP-POR-CR-838x419-RAL-B-3D	£778
Textured Stainless Steel	Stainless steel	16	51	LFPP-POR-CR-838x419-RSS-SS-3D	£778
Textured Stainless Steel	Brass	16	51	LFPP-POR-CR-838x419-RSS-B-3D	£842
Textured Brass	Stainless steel	16	51	LFPP-POR-CR-838x419-RTB-SS-3D	£834
Textured Brass	Brass	16	51	LFPP-POR-CR-838x419-RTB-B-3D	£898

Label Facing Peg Panels

Tall Corks RIGHT Panels

Componet Size: Height: 1257mm Width: 419mm Depth: 126mm (1 deep), 226mm (2 deep), 326mm (3 deep)	Fixings: 4 pairs 300mm Z-Clips (+ screws for clip to panel) Supplied with Pegs, nuts and washers for the pegs
--	--

1 Bottle Deep Bottle Capacity: 9



Panel Finish	Peg Finish	Unladen weight (kg)	Laden weight (kg)	Item Code	Price (Net of VAT)
Oak	Stainless steel	12	30	LFPP-TAL-CR-1257x419-O-SS-1D	£510
Oak	Brass	12	30	LFPP-TAL-CR-1257x419-O-B-1D	£539
Walnut	Stainless steel	12	30	LFPP-TAL-CR-1257x419-W-SS-1D	£526
Walnut	Brass	12	30	LFPP-TAL-CR-1257x419-W-B-1D	£555
Dark Stained Oak	Stainless steel	12	30	LFPP-TAL-CR-1257x419-DO-SS-1D	£524
Dark Stained Oak	Brass	12	30	LFPP-TAL-CR-1257x419-DO-B-1D	£553
Spray to RAL colour	Stainless steel	12	30	LFPP-TAL-CR-1257x419-RAL-SS-1D	£478
Spray to RAL colour	Brass	12	30	LFPP-TAL-CR-1257x419-RAL-B-1D	£507
Textured Stainless Steel	Stainless steel	16	34	LFPP-TAL-CR-1257x419-RSS-SS-1D	£557
Textured Stainless Steel	Brass	16	34	LFPP-TAL-CR-1257x419-RSS-B-1D	£586
Textured Brass	Stainless steel	16	34	LFPP-TAL-CR-1257x419-RTB-SS-1D	£640
Textured Brass	Brass	16	34	LFPP-TAL-CR-1257x419-RTB-B-1D	£669

2 Bottles Deep Bottle Capacity: 18



Panel Finish	Peg Finish	Unladen weight (kg)	Laden weight (kg)	Item Code	Price (Net of VAT)
Oak	Stainless steel	16	51	LFPP-TAL-CR-1257x419-O-SS-2D	£795
Oak	Brass	16	51	LFPP-TAL-CR-1257x419-O-B-2D	£857
Walnut	Stainless steel	16	51	LFPP-TAL-CR-1257x419-W-SS-2D	£811
Walnut	Brass	16	51	LFPP-TAL-CR-1257x419-W-B-2D	£873
Dark Stained Oak	Stainless steel	16	51	LFPP-TAL-CR-1257x419-DO-SS-2D	£809
Dark Stained Oak	Brass	16	51	LFPP-TAL-CR-1257x419-DO-B-2D	£871
Spray to RAL colour	Stainless steel	16	51	LFPP-TAL-CR-1257x419-RAL-SS-2D	£763
Spray to RAL colour	Brass	16	51	LFPP-TAL-CR-1257x419-RAL-B-2D	£825
Textured Stainless Steel	Stainless steel	20	55	LFPP-TAL-CR-1257x419-RSS-SS-2D	£842
Textured Stainless Steel	Brass	20	55	LFPP-TAL-CR-1257x419-RSS-B-2D	£904
Textured Brass	Stainless steel	20	55	LFPP-TAL-CR-1257x419-RTB-SS-2D	£925
Textured Brass	Brass	20	55	LFPP-TAL-CR-1257x419-RTB-B-2D	£988

3 Bottles Deep Bottle Capacity: 27



Panel Finish	Peg Finish	Unladen weight (kg)	Laden weight (kg)	Item Code	Price (Net of VAT)
Oak	Stainless steel	20	72	LFPP-TAL-CR-1257x419-O-SS-3D	£1,080
Oak	Brass	20	72	LFPP-TAL-CR-1257x419-O-B-3D	£1,176
Walnut	Stainless steel	20	72	LFPP-TAL-CR-1257x419-W-SS-3D	£1,096
Walnut	Brass	20	72	LFPP-TAL-CR-1257x419-W-B-3D	£1,192
Dark Stained Oak	Stainless steel	20	72	LFPP-TAL-CR-1257x419-DO-SS-3D	£1,094
Dark Stained Oak	Brass	20	72	LFPP-TAL-CR-1257x419-DO-B-3D	£1,190
Spray to RAL colour	Stainless steel	20	72	LFPP-TAL-CR-1257x419-RAL-SS-3D	£1,048
Spray to RAL colour	Brass	20	72	LFPP-TAL-CR-1257x419-RAL-B-3D	£1,144
Textured Stainless Steel	Stainless steel	23	76	LFPP-TAL-CR-1257x419-RSS-SS-3D	£1,127
Textured Stainless Steel	Brass	23	76	LFPP-TAL-CR-1257x419-RSS-B-3D	£1,223
Textured Brass	Stainless steel	23	76	LFPP-TAL-CR-1257x419-RTB-SS-3D	£1,210
Textured Brass	Brass	23	76	LFPP-TAL-CR-1257x419-RTB-B-3D	£1,306

Label Facing Peg Panels

Small Square Corks RIGHT Panels

Component Size:	Fixings:
Height: 419mm	2 pairs 300mm Z-Clips (+ screws for clip to panel)
Width: 419mm	Supplied with Pegs, nuts and washers for the pegs
Depth: 126mm (1 deep), 226mm (2 deep), 326mm (3 deep)	

1 Bottle Deep Bottle Capacity: 3



Panel Finish	Peg Finish	Unladen weight (kg)	Laden weight (kg)	Item Code	Price (Net of VAT)
Oak	Stainless steel	4	10	LFPP-SSQ-CR-419x419-O-SS-1D	£206
Oak	Brass	4	10	LFPP-SSQ-CR-419x419-O-B-1D	£215
Walnut	Stainless steel	4	10	LFPP-SSQ-CR-419x419-W-SS-1D	£213
Walnut	Brass	4	10	LFPP-SSQ-CR-419x419-W-B-1D	£223
Dark Stained Oak	Stainless steel	4	10	LFPP-SSQ-CR-419x419-DO-SS-1D	£213
Dark Stained Oak	Brass	4	10	LFPP-SSQ-CR-419x419-DO-B-1D	£222
Spray to RAL colour	Stainless steel	4	10	LFPP-SSQ-CR-419x419-RAL-SS-1D	£191
Spray to RAL colour	Brass	4	10	LFPP-SSQ-CR-419x419-RAL-B-1D	£200
Textured Stainless Steel	Stainless steel	6	11	LFPP-SSQ-CR-419x419-RSS-SS-1D	£246
Textured Stainless Steel	Brass	6	11	LFPP-SSQ-CR-419x419-RSS-B-1D	£256
Textured Brass	Stainless steel	6	11	LFPP-SSQ-CR-419x419-RTB-SS-1D	£275
Textured Brass	Brass	6	11	LFPP-SSQ-CR-419x419-RTB-B-1D	£285

2 Bottles Deep Bottle Capacity: 6



Panel Finish	Peg Finish	Unladen weight (kg)	Laden weight (kg)	Item Code	Price (Net of VAT)
Oak	Stainless steel	6	17	LFPP-SSQ-CR-419x419-O-SS-2D	£301
Oak	Brass	6	17	LFPP-SSQ-CR-419x419-O-B-2D	£322
Walnut	Stainless steel	6	17	LFPP-SSQ-CR-419x419-W-SS-2D	£309
Walnut	Brass	6	17	LFPP-SSQ-CR-419x419-W-B-2D	£329
Dark Stained Oak	Stainless steel	6	17	LFPP-SSQ-CR-419x419-DO-SS-2D	£308
Dark Stained Oak	Brass	6	17	LFPP-SSQ-CR-419x419-DO-B-2D	£328
Spray to RAL colour	Stainless steel	6	17	LFPP-SSQ-CR-419x419-RAL-SS-2D	£286
Spray to RAL colour	Brass	6	17	LFPP-SSQ-CR-419x419-RAL-B-2D	£306
Textured Stainless Steel	Stainless steel	7	19	LFPP-SSQ-CR-419x419-RSS-SS-2D	£341
Textured Stainless Steel	Brass	7	19	LFPP-SSQ-CR-419x419-RSS-B-2D	£362
Textured Brass	Stainless steel	7	19	LFPP-SSQ-CR-419x419-RTB-SS-2D	£370
Textured Brass	Brass	7	19	LFPP-SSQ-CR-419x419-RTB-B-2D	£391

3 Bottles Deep Bottle Capacity: 9



Panel Finish	Peg Finish	Unladen weight (kg)	Laden weight (kg)	Item Code	Price (Net of VAT)
Oak	Stainless steel	7	24	LFPP-SSQ-CR-419x419-O-SS-3D	£396
Oak	Brass	7	24	LFPP-SSQ-CR-419x419-O-B-3D	£428
Walnut	Stainless steel	7	24	LFPP-SSQ-CR-419x419-W-SS-3D	£404
Walnut	Brass	7	24	LFPP-SSQ-CR-419x419-W-B-3D	£436
Dark Stained Oak	Stainless steel	7	24	LFPP-SSQ-CR-419x419-DO-SS-3D	£403
Dark Stained Oak	Brass	7	24	LFPP-SSQ-CR-419x419-DO-B-3D	£435
Spray to RAL colour	Stainless steel	7	24	LFPP-SSQ-CR-419x419-RAL-SS-3D	£381
Spray to RAL colour	Brass	7	24	LFPP-SSQ-CR-419x419-RAL-B-3D	£413
Textured Stainless Steel	Stainless steel	8	26	LFPP-SSQ-CR-419x419-RSS-SS-3D	£436
Textured Stainless Steel	Brass	8	26	LFPP-SSQ-CR-419x419-RSS-B-3D	£468
Textured Brass	Stainless steel	8	26	LFPP-SSQ-CR-419x419-RTB-SS-3D	£465
Textured Brass	Brass	8	26	LFPP-SSQ-CR-419x419-RTB-B-3D	£497

Cork Facing Panels

Standard HIGH Density Panels

Component Size:	Fixings:
Height: 838mm	3 pairs 700mm Z-Clips (+ screws for clip to panel)
Width: 838mm	Supplied with Pegs, nuts and washers for the pegs
Depth: 326mm	

High Density Bottle Capacity: 49

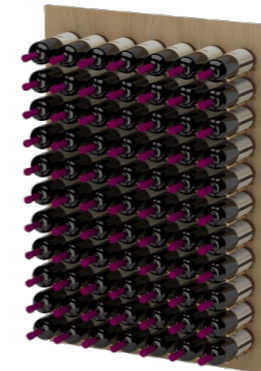


Panel Finish	Peg Finish	Unladen weight (kg)	Laden weight (kg)	Item Code	Price (Net of VAT)
Oak	Stainless steel	41	136	CFPP-STD-HI-838x838-O-SS	£944
Oak	Brass	41	136	CFPP-STD-HI-838x838-O-B	£1,153
Walnut	Stainless steel	41	136	CFPP-STD-HI-838x838-W-SS	£964
Walnut	Brass	41	136	CFPP-STD-HI-838x838-W-B	£1,174
Dark Stained Oak	Stainless steel	41	136	CFPP-STD-HI-838x838-DO-SS	£962
Dark Stained Oak	Brass	41	136	CFPP-STD-HI-838x838-DO-B	£1,171
Spray to RAL colour	Stainless steel	41	136	CFPP-STD-HI-838x838-RAL-SS	£903
Spray to RAL colour	Brass	41	136	CFPP-STD-HI-838x838-RAL-B	£1,113
Textured Stainless Steel	Stainless steel	46	141	CFPP-STD-HI-838x838-RSS-SS	£994
Textured Stainless Steel	Brass	46	141	CFPP-STD-HI-838x838-RSS-B	£1,204
Textured Brass	Stainless steel	46	141	CFPP-STD-HI-838x838-RTB-SS	£1,103
Textured Brass	Brass	46	141	CFPP-STD-HI-838x838-RTB-B	£1,312

Extra Large HIGH Density Panels

Component Size:	Fixings:
Height: 1257mm	4 pairs 700mm Z-Clips (+ screws for clip to panel)
Width: 838mm	Supplied with nuts and washers for the pegs
Depth: 326mm	

High Density Bottle Capacity: 77



Panel Finish	Peg Finish	Unladen weight (kg)	Laden weight (kg)	Item Code	Price (Net of VAT)
Oak	Stainless steel	63	213	CFPP-XL-HI-1257x838-O-SS	£1,431
Oak	Brass	63	213	CFPP-XL-HI-1257x838-O-B	£1,760
Walnut	Stainless steel	63	213	CFPP-XL-HI-1257x838-W-SS	£1,459
Walnut	Brass	63	213	CFPP-XL-HI-1257x838-W-B	£1,788
Dark Stained Oak	Stainless steel	63	213	CFPP-XL-HI-1257x838-DO-SS	£1,455
Dark Stained Oak	Brass	63	213	CFPP-XL-HI-1257x838-DO-B	£1,785
Spray to RAL colour	Stainless steel	63	213	CFPP-XL-HI-1257x838-RAL-SS	£1,376
Spray to RAL colour	Brass	63	213	CFPP-XL-HI-1257x838-RAL-B	£1,705
Textured Stainless Steel	Stainless steel	70	220	CFPP-XL-HI-1257x838-RSS-SS	£1,493
Textured Stainless Steel	Brass	70	220	CFPP-XL-HI-1257x838-RSS-B	£1,822
Textured Brass	Stainless steel	70	220	CFPP-XL-HI-1257x838-RTB-SS	£1,653
Textured Brass	Brass	70	220	CFPP-XL-HI-1257x838-RTB-B	£1,982

Portrait HIGH Density Panels

Component Size:	Fixings:
Height: 838mm	3 pairs 300mm Z-Clips (+ screws for clip to panel)
Width: 419mm	Supplied with Pegs, nuts and washers for the pegs
Depth: 326mm	

High Density Bottle Capacity: 21



Panel Finish	Peg Finish	Unladen weight (kg)	Laden weight (kg)	Item Code	Price (Net of VAT)
Oak	Stainless steel	18	59	CFPP-POR-HI-838x419-O-SS	£475
Oak	Brass	18	59	CFPP-POR-HI-838x419-O-B	£565
Walnut	Stainless steel	18	59	CFPP-POR-HI-838x419-W-SS	£487
Walnut	Brass	18	59	CFPP-POR-HI-838x419-W-B	£576
Dark Stained Oak	Stainless steel	18	59	CFPP-POR-HI-838x419-DO-SS	£485
Dark Stained Oak	Brass	18	59	CFPP-POR-HI-838x419-DO-B	£575
Spray to RAL colour	Stainless steel	18	59	CFPP-POR-HI-838x419-RAL-SS	£451
Spray to RAL colour	Brass	18	59	CFPP-POR-HI-838x419-RAL-B	£541
Textured Stainless Steel	Stainless steel	21	61	CFPP-POR-HI-838x419-RSS-SS	£515
Textured Stainless Steel	Brass	21	61	CFPP-POR-HI-838x419-RSS-B	£605
Textured Brass	Stainless steel	21	61	CFPP-POR-HI-838x419-RTB-SS	£571
Textured Brass	Brass	21	61	CFPP-POR-HI-838x419-RTB-B	£661

Cork Facing Panels

Tall HIGH Density Panels

Componet Size:	Fixings:
Height: 1257mm	4 pairs 300mm Z-Clips (+ screws for clip to panel)
Width: 419mm	Supplied with Pegs, nuts and washers for the pegs
Depth: 326mm	

High Density Bottle Capacity: 33



Panel Finish	Peg Finish	Unladen weight (kg)	Laden weight (kg)	Item Code	Price (Net of VAT)
Oak	Stainless steel	28	92	CFPP-TAL-HI-1257x419-O-SS	£706
Oak	Brass	28	92	CFPP-TAL-HI-1257x419-O-B	£848
Walnut	Stainless steel	28	92	CFPP-TAL-HI-1257x419-W-SS	£722
Walnut	Brass	28	92	CFPP-TAL-HI-1257x419-W-B	£864
Dark Stained Oak	Stainless steel	28	92	CFPP-TAL-HI-1257x419-DO-SS	£720
Dark Stained Oak	Brass	28	92	CFPP-TAL-HI-1257x419-DO-B	£862
Spray to RAL colour	Stainless steel	28	92	CFPP-TAL-HI-1257x419-RAL-SS	£674
Spray to RAL colour	Brass	28	92	CFPP-TAL-HI-1257x419-RAL-B	£816
Textured Stainless Steel	Stainless steel	32	96	CFPP-TAL-HI-1257x419-RSS-SS	£753
Textured Stainless Steel	Brass	32	96	CFPP-TAL-HI-1257x419-RSS-B	£895
Textured Brass	Stainless steel	32	96	CFPP-TAL-HI-1257x419-RTB-SS	£837
Textured Brass	Brass	32	96	CFPP-TAL-HI-1257x419-RTB-B	£978

Landscape HIGH Density Panels

Componet Size:	Fixings:
Height: 419mm	2 pairs 700mm Z-Clips (+ screws for clip to panel)
Width: 838mm	Supplied with Pegs, nuts and washers for the pegs
Depth: 326mm	

High Density Bottle Capacity: 21



Panel Finish	Peg Finish	Unladen weight (kg)	Laden weight (kg)	Item Code	Price (Net of VAT)
Oak	Stainless steel	19	60	CFPP-LAN-HI-419x838-O-SS	£445
Oak	Brass	19	60	CFPP-LAN-HI-419x838-O-B	£534
Walnut	Stainless steel	19	60	CFPP-LAN-HI-419x838-W-SS	£457
Walnut	Brass	19	60	CFPP-LAN-HI-419x838-W-B	£546
Dark Stained Oak	Stainless steel	19	60	CFPP-LAN-HI-419x838-DO-SS	£455
Dark Stained Oak	Brass	19	60	CFPP-LAN-HI-419x838-DO-B	£545
Spray to RAL colour	Stainless steel	19	60	CFPP-LAN-HI-419x838-RAL-SS	£421
Spray to RAL colour	Brass	19	60	CFPP-LAN-HI-419x838-RAL-B	£511
Textured Stainless Steel	Stainless steel	21	62	CFPP-LAN-HI-419x838-RSS-SS	£485
Textured Stainless Steel	Brass	21	62	CFPP-LAN-HI-419x838-RSS-B	£575
Textured Brass	Stainless steel	21	62	CFPP-LAN-HI-419x838-RTB-SS	£541
Textured Brass	Brass	21	62	CFPP-LAN-HI-419x838-RTB-B	£631

Small Square HIGH Density Panels

Componet Size:	Fixings:
Height: 419mm	2 pairs 300mm Z-Clips (+ screws for clip to panel)
Width: 419mm	Supplied with Pegs, nuts and washers for the pegs
Depth: 326mm	

High Density Bottle Capacity: 9



Panel Finish	Peg Finish	Unladen weight (kg)	Laden weight (kg)	Item Code	Price (Net of VAT)
Oak	Stainless steel	8	26	CFPP-SSQ-HI-419x419-O-SS	£243
Oak	Brass	8	26	CFPP-SSQ-HI-419x419-O-B	£282
Walnut	Stainless steel	8	26	CFPP-SSQ-HI-419x419-W-SS	£251
Walnut	Brass	8	26	CFPP-SSQ-HI-419x419-W-B	£289
Dark Stained Oak	Stainless steel	8	26	CFPP-SSQ-HI-419x419-DO-SS	£250
Dark Stained Oak	Brass	8	26	CFPP-SSQ-HI-419x419-DO-B	£288
Spray to RAL colour	Stainless steel	8	26	CFPP-SSQ-HI-419x419-RAL-SS	£228
Spray to RAL colour	Brass	8	26	CFPP-SSQ-HI-419x419-RAL-B	£266
Textured Stainless Steel	Stainless steel	10	27	CFPP-SSQ-HI-419x419-RSS-SS	£274
Textured Stainless Steel	Brass	10	27	CFPP-SSQ-HI-419x419-RSS-B	£312
Textured Brass	Stainless steel	10	27	CFPP-SSQ-HI-419x419-RTB-SS	£303
Textured Brass	Brass	10	27	CFPP-SSQ-HI-419x419-RTB-B	£342

Cork Facing Panels

Standard LOW Density Panels

Componet Size:	Fixings:
Height: 838mm	3 pairs 700mm Z-Clips (+ screws for clip to panel)
Width: 838mm	Supplied with Pegs, nuts and washers for the pegs
Depth: 326mm	

Low Density Bottle Capacity: 36



Panel Finish	Peg Finish	Unladen weight (kg)	Laden weight (kg)	Item Code	Price (Net of VAT)
Oak	Stainless steel	33	103	CFPP-STD-LO-838x838-O-SS	£760
Oak	Brass	33	103	CFPP-STD-LO-838x838-O-B	£914
Walnut	Stainless steel	33	103	CFPP-STD-LO-838x838-W-SS	£780
Walnut	Brass	33	103	CFPP-STD-LO-838x838-W-B	£934
Dark Stained Oak	Stainless steel	33	103	CFPP-STD-LO-838x838-DO-SS	£778
Dark Stained Oak	Brass	33	103	CFPP-STD-LO-838x838-DO-B	£932
Spray to RAL colour	Stainless steel	33	103	CFPP-STD-LO-838x838-RAL-SS	£719
Spray to RAL colour	Brass	33	103	CFPP-STD-LO-838x838-RAL-B	£873
Textured Stainless Steel	Stainless steel	38	108	CFPP-STD-LO-838x838-RSS-SS	£811
Textured Stainless Steel	Brass	38	108	CFPP-STD-LO-838x838-RSS-B	£965
Textured Brass	Stainless steel	38	108	CFPP-STD-LO-838x838-RTB-SS	£919
Textured Brass	Brass	38	108	CFPP-STD-LO-838x838-RTB-B	£1,073

Extra Large LOW Density Panels

Componet Size:	Fixings:
Height: 1257mm	4 pairs 700mm Z-Clips (+ screws for clip to panel)
Width: 838mm	Supplied with Pegs, nuts and washers for the pegs
Depth: 326mm	

Low Density Bottle Capacity: 54



Panel Finish	Peg Finish	Unladen weight (kg)	Laden weight (kg)	Item Code	Price (Net of VAT)
Oak	Stainless steel	49	154	CFPP-XL-LO-1257x838-O-SS	£1,021
Oak	Brass	49	154	CFPP-XL-LO-1257x838-O-B	£1,252
Walnut	Stainless steel	49	154	CFPP-XL-LO-1257x838-W-SS	£1,041
Walnut	Brass	49	154	CFPP-XL-LO-1257x838-W-B	£1,273
Dark Stained Oak	Stainless steel	49	154	CFPP-XL-LO-1257x838-DO-SS	£1,039
Dark Stained Oak	Brass	49	154	CFPP-XL-LO-1257x838-DO-B	£1,270
Spray to RAL colour	Stainless steel	49	154	CFPP-XL-LO-1257x838-RAL-SS	£981
Spray to RAL colour	Brass	49	154	CFPP-XL-LO-1257x838-RAL-B	£1,212
Textured Stainless Steel	Stainless steel	56	162	CFPP-XL-LO-1257x838-RSS-SS	£1,072
Textured Stainless Steel	Brass	56	162	CFPP-XL-LO-1257x838-RSS-B	£1,303
Textured Brass	Stainless steel	56	162	CFPP-XL-LO-1257x838-RTB-SS	£1,180
Textured Brass	Brass	56	162	CFPP-XL-LO-1257x838-RTB-B	£1,411

Portrait LOW Density Panels

Componet Size:	Fixings:
Height: 838mm	3 pairs 300mm Z-Clips (+ screws for clip to panel)
Width: 419mm	Supplied with Pegs, nuts and washers for the pegs
Depth: 326mm	

Low Density Bottle Capacity: 18



Panel Finish	Peg Finish	Unladen weight (kg)	Laden weight (kg)	Item Code	Price (Net of VAT)
Oak	Stainless steel	16	51	CFPP-POR-LO-838x419-O-SS	£432
Oak	Brass	16	51	CFPP-POR-LO-838x419-O-B	£509
Walnut	Stainless steel	16	51	CFPP-POR-LO-838x419-W-SS	£444
Walnut	Brass	16	51	CFPP-POR-LO-838x419-W-B	£521
Dark Stained Oak	Stainless steel	16	51	CFPP-POR-LO-838x419-DO-SS	£443
Dark Stained Oak	Brass	16	51	CFPP-POR-LO-838x419-DO-B	£520
Spray to RAL colour	Stainless steel	16	51	CFPP-POR-LO-838x419-RAL-SS	£409
Spray to RAL colour	Brass	16	51	CFPP-POR-LO-838x419-RAL-B	£486
Textured Stainless Steel	Stainless steel	19	54	CFPP-POR-LO-838x419-RSS-SS	£472
Textured Stainless Steel	Brass	19	54	CFPP-POR-LO-838x419-RSS-B	£549
Textured Brass	Stainless steel	19	54	CFPP-POR-LO-838x419-RTB-SS	£529
Textured Brass	Brass	19	54	CFPP-POR-LO-838x419-RTB-B	£606

Cork Facing Panels

Tall LOW Density Panels

Componet Size:	Fixings:
Height: 1257mm Width: 419mm Depth: 326mm	4 pairs 300mm Z-Clips (+ screws for clip to panel) Supplied with Pegs, nuts and washers for the pegs

Low Density Bottle Capacity: 27

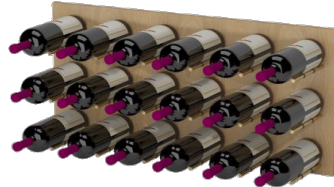


Panel Finish	Peg Finish	Unladen weight (kg)	Laden weight (kg)	Item Code	Price (Net of VAT)
Oak	Stainless steel	24	77	CFPP-TAL-LO-1257x419-O-SS	£621
Oak	Brass	24	77	CFPP-TAL-LO-1257x419-O-B	£737
Walnut	Stainless steel	24	77	CFPP-TAL-LO-1257x419-W-SS	£638
Walnut	Brass	24	77	CFPP-TAL-LO-1257x419-W-B	£753
Dark Stained Oak	Stainless steel	24	77	CFPP-TAL-LO-1257x419-DO-SS	£636
Dark Stained Oak	Brass	24	77	CFPP-TAL-LO-1257x419-DO-B	£751
Spray to RAL colour	Stainless steel	24	77	CFPP-TAL-LO-1257x419-RAL-SS	£590
Spray to RAL colour	Brass	24	77	CFPP-TAL-LO-1257x419-RAL-B	£705
Textured Stainless Steel	Stainless steel	28	81	CFPP-TAL-LO-1257x419-RSS-SS	£669
Textured Stainless Steel	Brass	28	81	CFPP-TAL-LO-1257x419-RSS-B	£784
Textured Brass	Stainless steel	28	81	CFPP-TAL-LO-1257x419-RTB-SS	£752
Textured Brass	Brass	28	81	CFPP-TAL-LO-1257x419-RTB-B	£867

Landscape LOW Density Panels

Componet Size:	Fixings:
Height: 419mm Width: 838mm Depth: 326mm	2 pairs 700mm Z-Clips (+ screws for clip to panel) Supplied with Pegs, nuts and washers for the pegs

Low Density Bottle Capacity: 18



Panel Finish	Peg Finish	Unladen weight (kg)	Laden weight (kg)	Item Code	Price (Net of VAT)
Oak	Stainless steel	17	52	CFPP-LAN-LO-419x838-O-SS	£402
Oak	Brass	17	52	CFPP-LAN-LO-419x838-O-B	£479
Walnut	Stainless steel	17	52	CFPP-LAN-LO-419x838-W-SS	£414
Walnut	Brass	17	52	CFPP-LAN-LO-419x838-W-B	£491
Dark Stained Oak	Stainless steel	17	52	CFPP-LAN-LO-419x838-DO-SS	£413
Dark Stained Oak	Brass	17	52	CFPP-LAN-LO-419x838-DO-B	£490
Spray to RAL colour	Stainless steel	17	52	CFPP-LAN-LO-419x838-RAL-SS	£379
Spray to RAL colour	Brass	17	52	CFPP-LAN-LO-419x838-RAL-B	£456
Textured Stainless Steel	Stainless steel	19	54	CFPP-LAN-LO-419x838-RSS-SS	£442
Textured Stainless Steel	Brass	19	54	CFPP-LAN-LO-419x838-RSS-B	£519
Textured Brass	Stainless steel	19	54	CFPP-LAN-LO-419x838-RTB-SS	£499
Textured Brass	Brass	19	54	CFPP-LAN-LO-419x838-RTB-B	£576

Small Square LOW Density Panels

Componet Size:	Fixings:
Height: 419mm Width: 419mm Depth: 326mm	2 pairs 300mm Z-Clips (+ screws for clip to panel) Supplied with Pegs, nuts and washers for the pegs

Low Density Bottle Capacity: 9

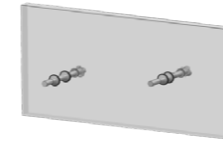


Panel Finish	Peg Finish	Unladen weight (kg)	Laden weight (kg)	Item Code	Price (Net of VAT)
Oak	Stainless steel	8	26	CFPP-SSQ-LO-419x419-O-SS	£243
Oak	Brass	8	26	CFPP-SSQ-LO-419x419-O-B	£282
Walnut	Stainless steel	8	26	CFPP-SSQ-LO-419x419-W-SS	£251
Walnut	Brass	8	26	CFPP-SSQ-LO-419x419-W-B	£289
Dark Stained Oak	Stainless steel	8	26	CFPP-SSQ-LO-419x419-DO-SS	£250
Dark Stained Oak	Brass	8	26	CFPP-SSQ-LO-419x419-DO-B	£288
Spray to RAL colour	Stainless steel	8	26	CFPP-SSQ-LO-419x419-RAL-SS	£228
Spray to RAL colour	Brass	8	26	CFPP-SSQ-LO-419x419-RAL-B	£266
Textured Stainless Steel	Stainless steel	10	27	CFPP-SSQ-LO-419x419-RSS-SS	£274
Textured Stainless Steel	Brass	10	27	CFPP-SSQ-LO-419x419-RSS-B	£312
Textured Brass	Stainless steel	10	27	CFPP-SSQ-LO-419x419-RTB-SS	£303
Textured Brass	Brass	10	27	CFPP-SSQ-LO-419x419-RTB-B	£342

Label Facing Display Pegs (no panels)

1 bottle deep

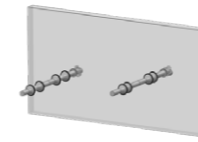
Componet Size:	Fixings:
Depth: 100mm Diameter: 20mm	Supplied with nuts and washers for the pegs Pegs supplied as a pair



Bottle Capacity:	1	
Peg Finish	Item Code	Price (Net of VAT)
Stainless steel	LFBDP-SS-1D	£30
Brass	LFBDP-B-1D	£33

2 bottles deep

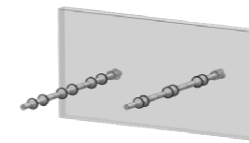
Componet Size:	Fixings:
Depth: 200mm Diameter: 20mm	Supplied with nuts and washers for the pegs Pegs supplied as 2 pairs



Bottle Capacity:	2	
Peg Finish	Item Code	Price (Net of VAT)
Stainless steel	LFBDP-SS-2D	£62
Brass	LFBDP-B-2D	£69

3 bottles deep

Componet Size:	Fixings:
Depth: 300mm Diameter: 20mm	Supplied with nuts and washers for the pegs Pegs supplied as 3 pairs

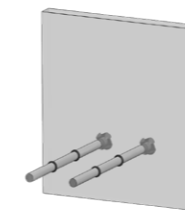


Bottle Capacity:	3	
Peg Finish	Item Code	Price (Net of VAT)
Stainless steel	LFBDP-SS-3D	£93
Brass	LFBDP-B-3D	£104

Cork Facing Pegs (no panels)

1 bottle

Componet Size:	Fixings:
Depth: 185mm Diameter: 10mm	Supplied with nuts and washers for the pegs Pegs supplied as a pair



Bottle Capacity:	1	
Peg Finish	Item Code	Price (Net of VAT)
Stainless steel	CFBP-SS-1D	£14
Brass	CFBP-B-1D	£18

Suspended Bottle Cradles

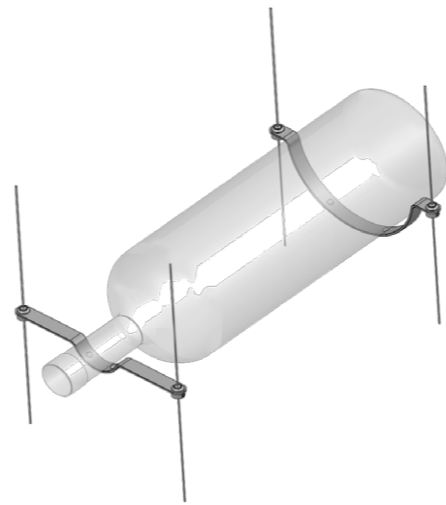
Product Information

Cradles

- Crafted in stainless steel with stainless steel tension fixings and cables.
- Two cradles supplied per bottle: 1x neck and 1x body.
- Fitted with clear anti-vibration pads for bottle contact. Silent to stock when placing glass onto metal.

Cables

- Supplied in 3m lengths as standard, can be trimmed to fit.
- Can also be supplied longer to special order at an additional cost.



Number of Bottles in each column	Number of Columns of Bottles									
	1	2	3	4	5	6	7	8	9	10
1	£260	£521	£781	£1,041	£1,302	£1,562	£1,822	£2,083	£2,343	£2,603
2	£323	£645	£968	£1,291	£1,613	£1,936	£2,259	£2,581	£2,904	£3,227
3	£385	£770	£1,155	£1,540	£1,925	£2,310	£2,695	£3,080	£3,465	£3,850
4	£447	£895	£1,342	£1,789	£2,237	£2,684	£3,131	£3,579	£4,026	£4,473
5	£510	£1,019	£1,529	£2,039	£2,548	£3,058	£3,568	£4,077	£4,587	£5,097
6	£572	£1,144	£1,716	£2,288	£2,860	£3,432	£4,004	£4,576	£5,148	£5,720
7	£634	£1,269	£1,903	£2,537	£3,172	£3,806	£4,440	£5,075	£5,709	£6,343
8	£697	£1,393	£2,090	£2,787	£3,483	£4,180	£4,877	£5,573	£6,270	£6,967
9	£759	£1,518	£2,277	£3,036	£3,795	£4,554	£5,313	£6,072	£6,831	£7,590
10	£821	£1,643	£2,464	£3,285	£4,107	£4,928	£5,749	£6,571	£7,392	£8,214
11	£884	£1,767	£2,651	£3,535	£4,418	£5,302	£6,186	£7,070	£7,953	£8,837
12	£946	£1,892	£2,838	£3,784	£4,730	£5,676	£6,622	£7,568	£8,514	£9,460
13	£1,008	£2,017	£3,025	£4,033	£5,042	£6,050	£7,059	£8,067	£9,075	£10,084
14	£1,071	£2,141	£3,212	£4,283	£5,354	£6,424	£7,495	£8,566	£9,636	£10,707
15	£1,133	£2,266	£3,399	£4,532	£5,665	£6,798	£7,931	£9,064	£10,197	£11,330
16	£1,195	£2,391	£3,586	£4,782	£5,977	£7,172	£8,368	£9,563	£10,758	£11,954
17	£1,258	£2,515	£3,773	£5,031	£6,289	£7,546	£8,804	£10,062	£11,319	£12,577
18	£1,320	£2,640	£3,960	£5,280	£6,600	£7,920	£9,240	£10,560	£11,880	£13,201
19	£1,382	£2,765	£4,147	£5,530	£6,912	£8,294	£9,677	£11,059	£12,441	£13,824
20	£1,445	£2,889	£4,334	£5,779	£7,224	£8,668	£10,113	£11,558	£13,003	£14,447

Suspended Bottle Cradles

Design & Fitting Information

Design

- Max 20 bottles / 40kg total weight per column.
- Spacing of the cradle for a regular bottle is set to allow a min. width of 400mm per bottle (some bottles can be 315mm long). (this gives 50mm of space each end of the bottle, therefore 100mm nose to tail gap when using several columns).
- Spacing between ceiling and floor fixings - 230mm (bottle length) - 125mm (bottle width).

Bottle capacity

- Can take all regular bottles including champagne and wide body champagne bottles like Don Perignon.
- Can take half bottles - although neck to body cradle spacing of fixings may need to be reduced.

Fitting

- Only sold as a kit. For installation by others, but very easy to fit - may be fitted by competent DIYer.
- Screw fixing into structural ceiling substrate required - ie. ceiling joist, concealed timber battens, plywood.
- NB: Spiral Cellars does not supply screws to fix the tensioners to your wall / ceiling substrates. It is the responsibility of the installer to supply screws that are most suitable for the surface substrates. When choosing screws, be mindful of the combined weight of the fixings, cables and wine bottles they must support. We recommend using countersunk flathead screws to ensure that the screw lies flush with the surface.
- Not suitable for raw/plugging into plasterboard.
- Fixed from top down. Mark out and check fixing screw positions before drilling.
- Cradles are threaded onto cables and fixed prior to tensioning.
- Cradles are fixed in position with grub screws and can be easily adjusted once in place.
- Excess wire can be cut off with either wire clippers or pliers.

Pricing & Delivery

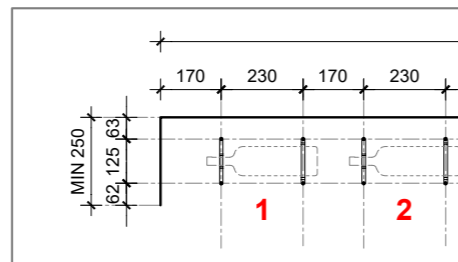
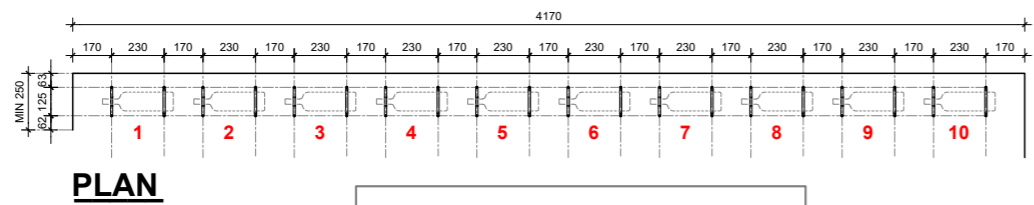
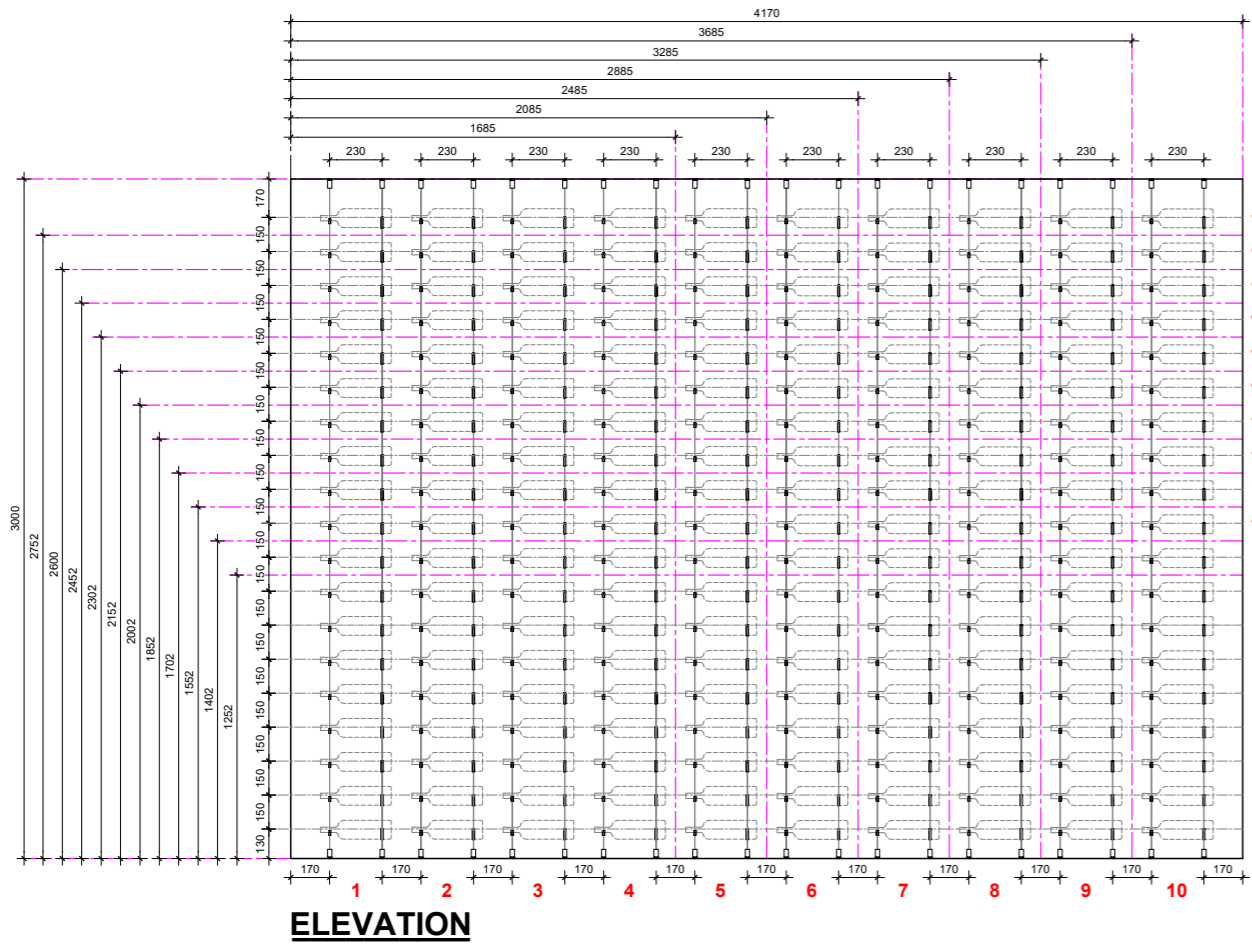
- Prices do not include VAT or delivery cost.
- Cables and fixings supplied and priced per column (ie, 4 cables and fixings per column).
- Delivered packaged with fixing instructions.

Number of Bottles in each column	Number of Columns of Bottles									
	11	12	13	14	15	16	17	18	19	20
1	£2,864	£3,124	£3,384	£3,645	£3,905	£4,165	£4,426	£4,686	£4,946	£5,207
2	£3,549	£3,872	£4,195	£4,517	£4,840	£5,163	£5,485	£5,808	£6,131	£6,453
3	£4,235	£4,620	£5,005	£5,390	£5,775	£6,160	£6,545	£6,930	£7,315	£7,700
4	£4,921	£5,368	£5,815	£6,263	£6,710	£7,157	£7,605	£8,052	£8,499	£8,947
5	£5,606	£6,116	£6,626	£7,135	£7,645	£8,155	£8,664	£9,174	£9,684	£10,193
6	£6,292	£6,864	£7,436	£8,008	£8,580	£9,152	£9,724	£10,296	£10,868	£11,440
7	£6,978	£7,612	£8,247	£8,881	£9,515	£10,150	£10,784	£11,418	£12,053	£12,687
8	£7,664	£8,360	£9,057	£9,754	£10,450	£11,147	£11,844	£12,540	£13,237	£13,934
9	£8,349	£9,108	£9,867	£10,626	£11,385	£12,144	£12,903	£13,662	£14,421	£15,180
10	£9,035	£9,856	£10,678	£11,499	£12,320	£13,142	£13,963	£14,784	£15,606	£16,427
11	£9,721	£10,604	£11,488	£12,372	£13,255	£14,139	£15,023	£15,906	£16,790	£17,674
12	£10,406	£11,352	£12,298	£13,244	£14,190	£15,136	£16,083	£17,029	£17,975	£18,921
13	£11,092	£12,100	£13,109	£14,117	£15,126	£16,134	£17,142	£18,151	£19,159	£20,167
14	£11,778	£12,848	£13,919	£14,990	£16,061	£17,131	£18,202	£19,273	£20,343	£21,414
15	£12,463	£13,596	£14,730	£15,863	£16,996	£18,129	£19,262	£20,395	£21,528	£22,661
16	£13,149	£14,345	£15,540	£16,735	£17,931	£19,126	£20,321	£21,517	£22,712	£23,908
17	£13,835	£15,093	£16,350	£17,608	£18,866	£20,123	£21,381	£22,639	£23,897	£25,154
18	£14,521	£15,841	£17,161	£18,481	£19,801	£21,121	£22,441	£23,761	£25,081	£26,401
19	£15,206	£16,589	£17,971	£19,353	£20,736	£22,118	£23,501	£24,883	£26,265	£27,648
20	£15,892	£17,337	£18,781	£20,226	£21,671	£23,116	£24,560	£26,005	£27,450	£28,895

Suspended Bottle Cradles

Label Facing HIGH Density

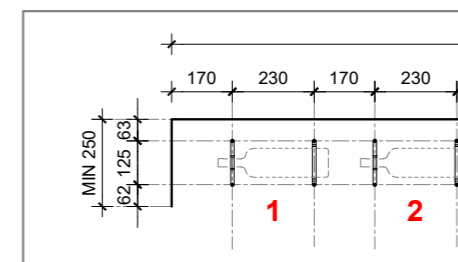
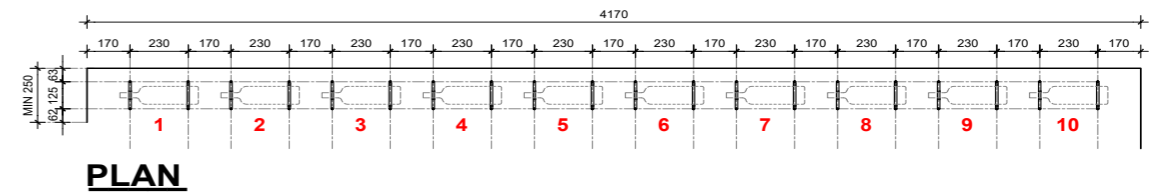
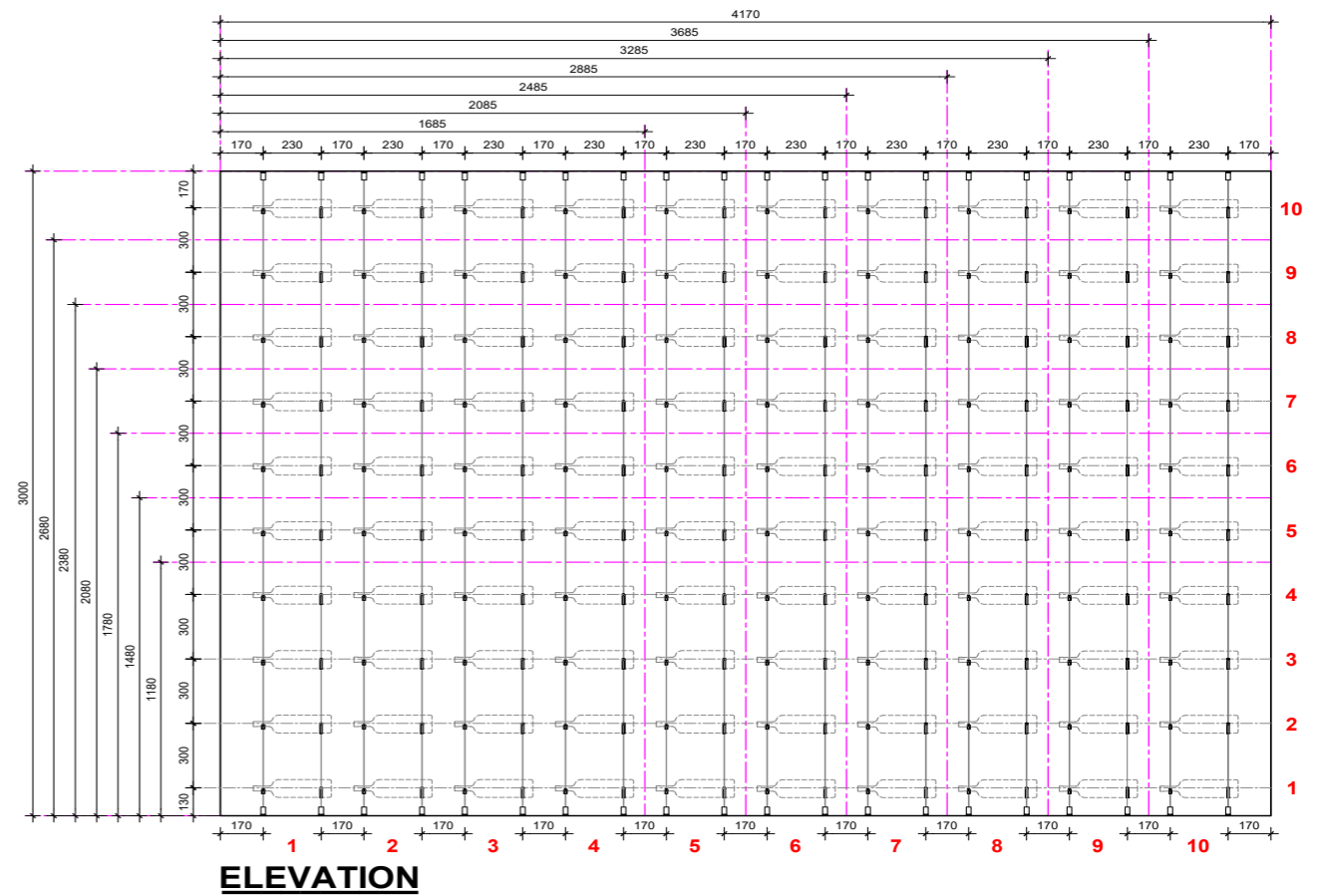
Spacing of cables, LEFT to RIGHT = 230mm apart
Spacing of cables, FRONT to BACK = 125mm apart
170mm Recommended spacing - can be adjusted to suit



Suspended Bottle Cradles

Label Facing LOW Density

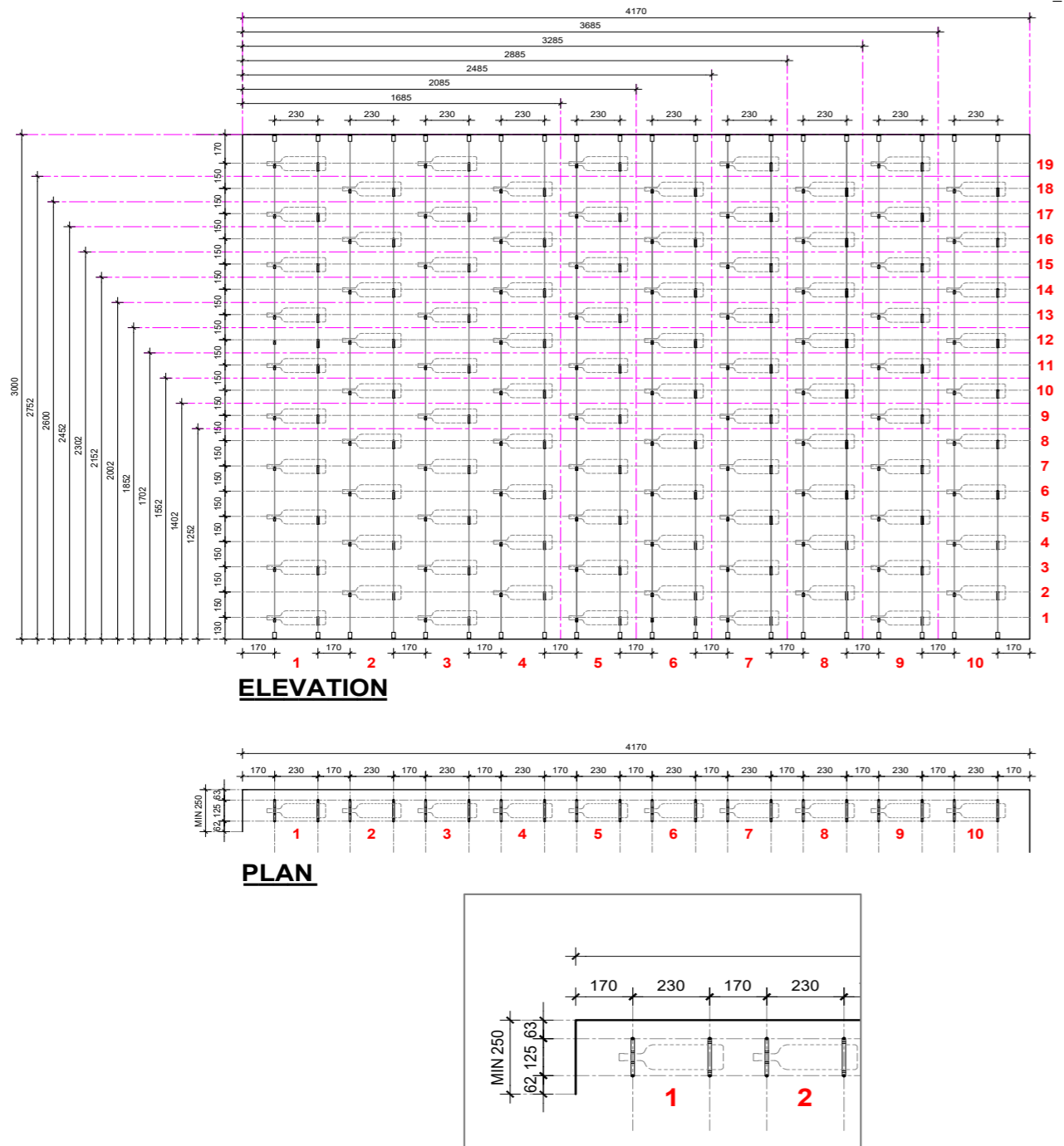
Spacing of cables, LEFT to RIGHT = 230mm apart
Spacing of cables, FRONT to BACK = 125mm apart
170mm Recommended spacing - can be adjusted to suit



Suspended Bottle Cradles

Label Facing STAGGERED

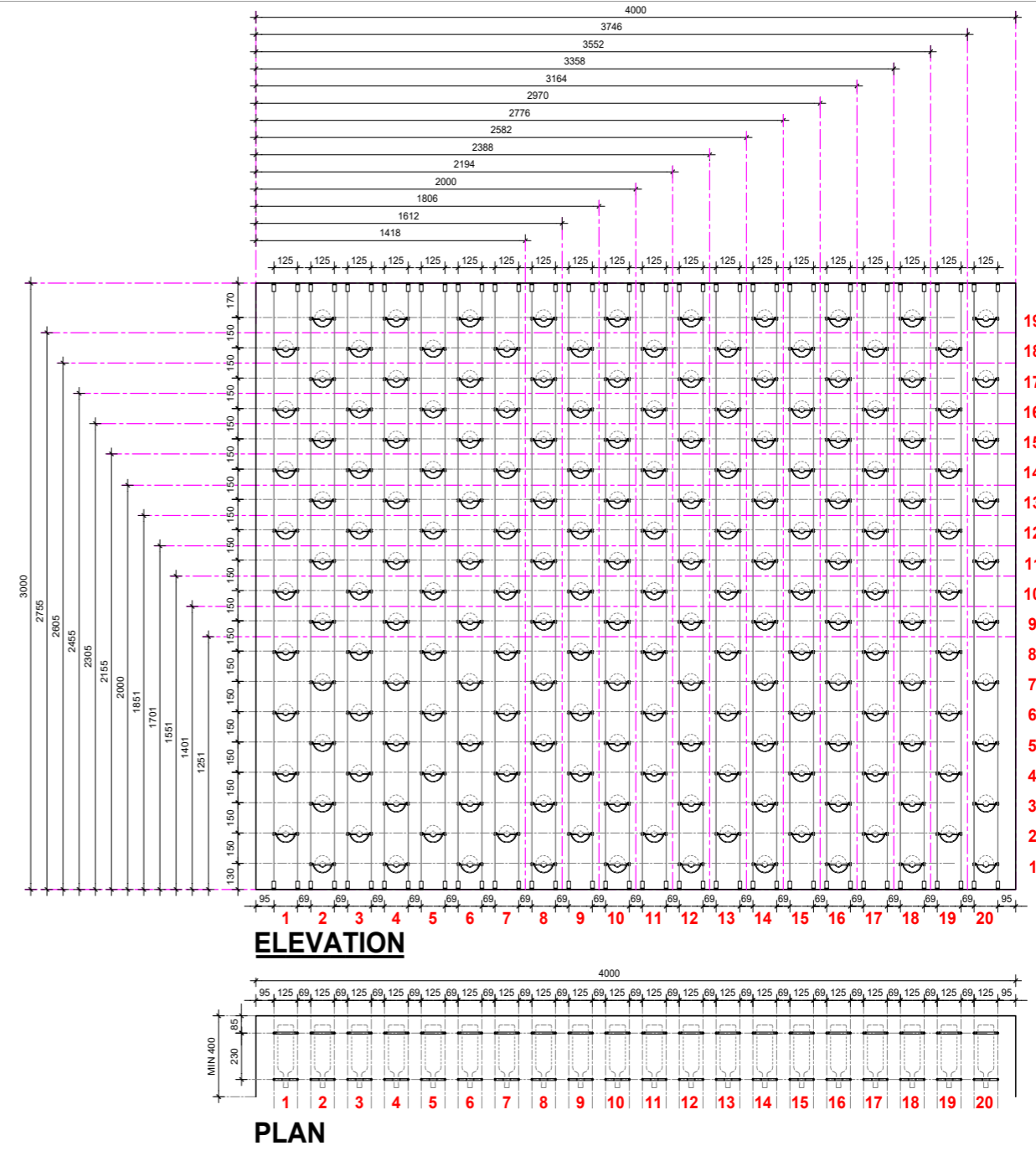
Spacing of cables, LEFT to RIGHT = 230mm apart
Spacing of cables, FRONT to BACK = 125mm apart
170mm Recommended spacing - can be adjusted to suit



Suspended Bottle Cradles

Cork Facing STAGGERED

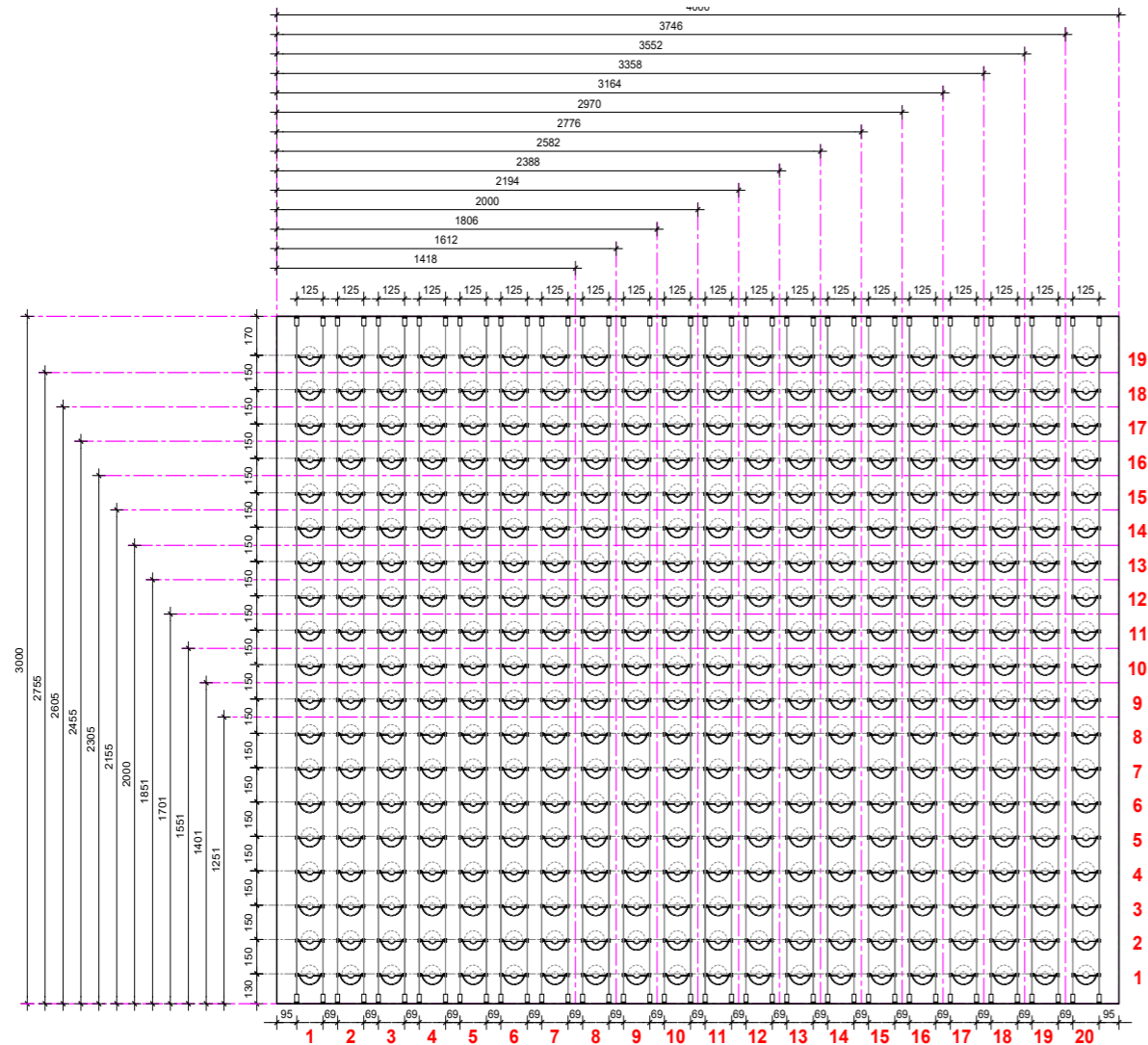
Spacing of cables, LEFT to RIGHT = 125mm apart
Spacing of cables, FRONT to BACK = 230mm apart
69mm Recommended spacing - can be adjusted to suit



Suspended Bottle Cradles

Cork Facing HIGH Density

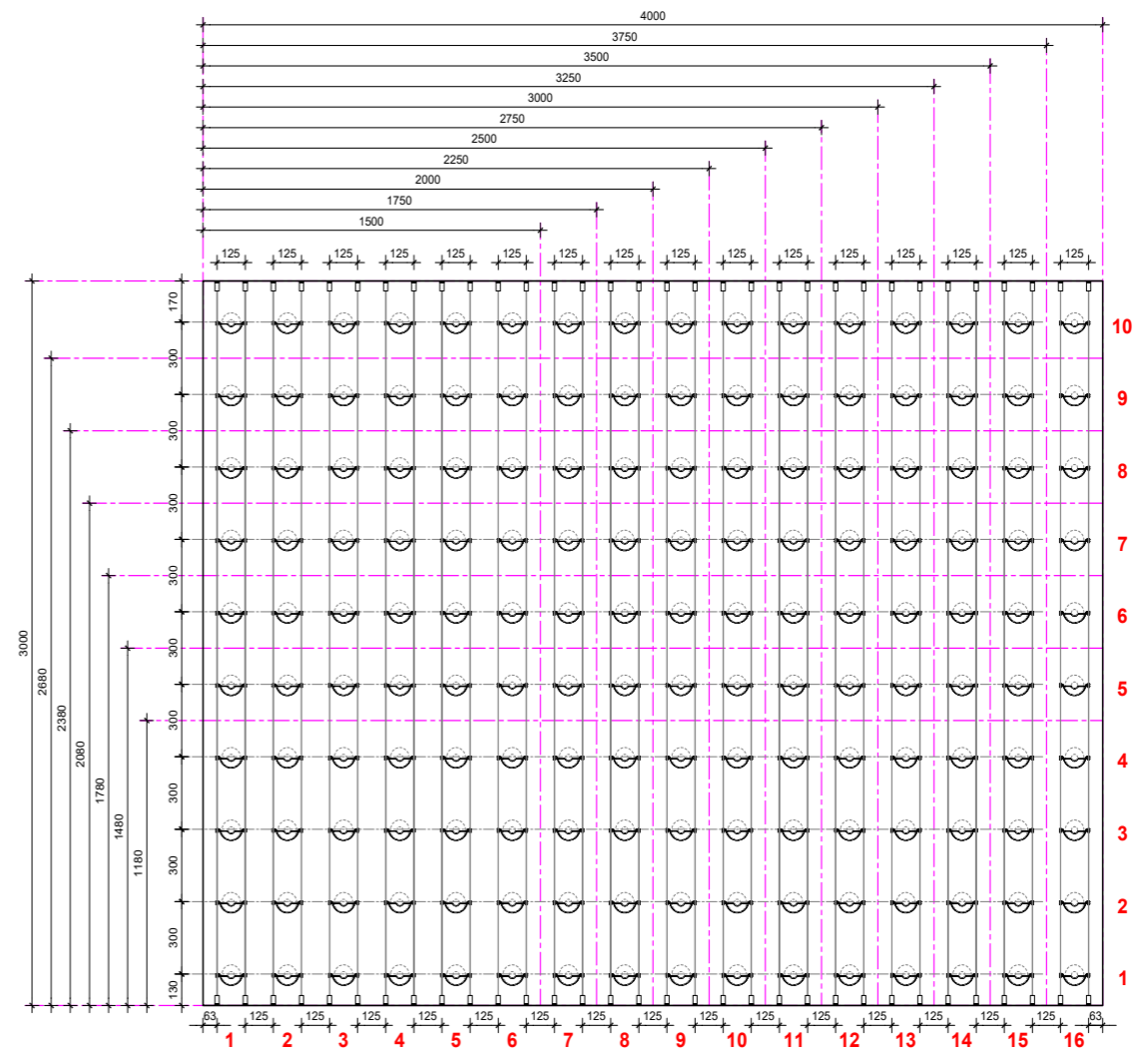
Spacing of cables, LEFT to RIGHT = 125mm apart
Spacing of cables, FRONT to BACK = 230mm apart
69mm Recommended spacing - can be adjusted to suit



Suspended Bottle Cradles

Cork Facing LOW Density

Spacing of cables, LEFT to RIGHT = 125mm apart
Spacing of cables, FRONT to BACK = 230mm apart
69mm Recommended spacing - can be adjusted to suit



Ready To Cellar FAQs

How do I place an order?

To place an order complete the online form using the QR code below, or by visiting www.spiralcellars.co.uk/wine-display-cabinets-rooms-walls/ and send it back to us. Once we have received your order form we will be in touch to confirm the order, arrange delivery and take payment.

How can I check my order will fit?

We can check that your order fits your space and suggest alternative component mixes if it doesn't. To do so, you'll need to send us accurate and fully detailed measurements of your space, including floor to ceiling height and location/measurements of any obstacles, together with location photographs. Alternatively, we can design your space for you for an additional fee.

I'm a competent DIYer. Can I install the wine room myself or do I need to outsource to the professionals?

An entire wine room may be complicated and often requires the provision of specialist insulation and vapour control. However, if you have a team already constructing the wine room structure then the panels and cable systems themselves are very easy to install by a competent DIYer with the right tools.

I don't have a build team. Will you be able to install the wine room for me?

The Ready to Cellar Collection is an affordable self-build, modular kit system available for delivery only. We do not install.

Can you recommend a build team, local to my area?

We have a network of registered Spiral Cellar partner installers who we are happy to put you in touch with for you to directly employ to install your project.

Is there an option to have a special finish to match my room?

To maintain its affordability the Ready to Cellar Collection is only available in the prescribed 6 panel finishes and 2 metal finishes. We can arrange for special finishes to 'special order' although these will be estimated as 'bespoke orders' and will often attract a premium pricing.

How do the individual panel pieces fit together?

Regardless of panel finish and type, all pieces fit perfectly together, though they can also be spaced out for a more dramatic effect. Each panel is attached to the wall with our Spiral Cellar z-clips creating only a 5mm gap and concealing all fixings. As the entire weight of the panels plus the wine rested on them is born by the wall, it is imperative that before installation the wall surface and structure is checked to ensure it can take the weight of the panels and the wine. Your trade professional installer will be able to advise on your site specific conditions.

How heavy are the individual pieces? Does this have an impact on where they can go?

The weight of each panel component, both unladen and stocked with wine, are listed in the catalogue pages. Panels are designed to hang on vertical walls. The largest panels require a 2-man installation team for lifting safety. The structural substrate material for either wall or ceiling fixed Ready to Cellar components are highlighted in the installation instructions.

How long does it take to assemble a wine space using Ready to Cellar pieces?

Individual Ready to Cellar Collection pieces are very quick to assemble. The majority of the installation time is usually spent measuring, marking out and ensuring perfect plumb alignment.

Does the space need to be prepared in any way prior to installing the Ready to Cellar components?

If your wine cellar is climate-controlled, the insulation, vapour control and structure of your walls and ceiling must be carried out first. Any wall structure or base wall finishes (either paint or panel cladding) should be undertaken before fitting cellar panels or suspension cables.

Walls need to be flat, true and plumb vertical to allow the panels and Z-clips to fit flush. The components are rigid and will not bend to match any wall curvature. A curved or uneven wall may compromise the structural integrity of the installation. The preparation of the wall is the responsibility of the client. Spiral Cellars will not be responsible for any damage resulting from improper wall preparation or component installation.

Do components come with wall fixings?

All Ready to Cellar components come with fixings included, except for the screws required to fix the Z Clips to your walls which you must supply yourself. We recommend using countersunk flathead screws to fix the Z clips to your wall as these will ensure the screw lies flush with the surface. Be mindful of the combined weight of the components and the static load of wine when selecting suitable wall fixings.

Note that components must only be attached to structural walls or plasterboard walls with 18mm plywood or MDF under the plasterboard face (marine ply or MRMDf if the space is to be climate controlled). Note that plain plasterboard or cavity stud walls are not secure enough to hold the weight of the components.

What if the components don't fit in the space when they arrive?

If your components do not fit your space we need to first determine why. Check your own measurements and the measurements you gave us and the size of the components you ordered. If a mistake has been made in your order, please contact us straight away so we can help resolve the matter.

What if I forgot to include some pieces in my order?

If you find that you have forgotten to order some Ready to Cellar components, please contact us immediately to place a second order for the forgotten components. The more popular components held in stock will be dispatched quickly, however there will be a delay in delivering items not held in stock. Please be aware that components in natural finishes may vary slightly in colour, figure, and patina from batch to batch. This is symptomatic of an organic natural product and although we undertake to match as closely as possible, an exact match between different production batches can not be guaranteed.

Can I return any items that I no longer need?

As Ready to Cellar components are made to order, we do not accept returns other than if faulty. The exception is for components we feel we can quickly resell. In such instances, the items need to be returned to us in perfect condition. Please call us if you want to discuss the return of any components.

What is the warranty on Ready to Cellar Collection pieces?

Ready to Cellar Collection items are warrantied for 2 years against structural product failure through normal product usage. The warranty is not valid for damage through misuse, overloading, poor installation, inadequate substrates, dropping or as a result of pulling from the wall/ceiling. The warranty does not cover the metal and finishes having patinated or colour faded over time as this will have been caused by factors beyond our control ie. sunlight, location, cleaning materials etc.



Scan for
Order Form

Discover our full range of cellaring and solutions.

Whether you dream of a spectacular cellar, a walk-in wine room, a state-of-the-art wine wall – or simply some expert advice on climate control – we have a solution that fits your needs, taste, and of course, your lifestyle



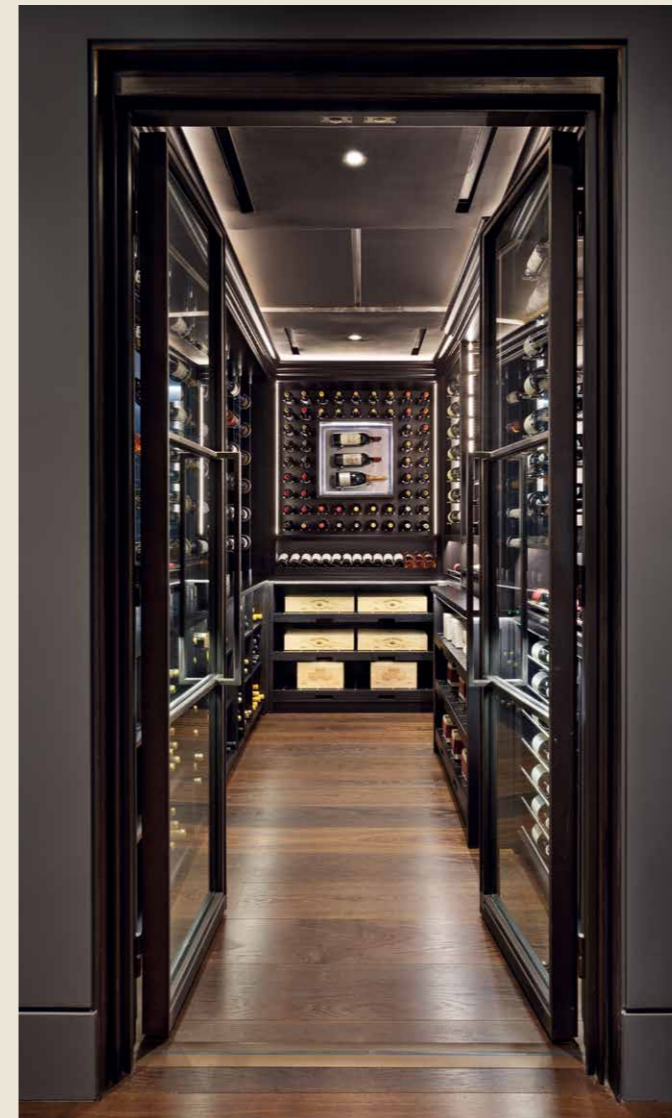
Spiral Cellars

Our signature Spiral Cellar is a winding wonder of wine storage, and can be installed in almost any space, without the need for an existing basement or cellar. Naturally climate controlled, it's professional cellaring at home... with added wow-factor.



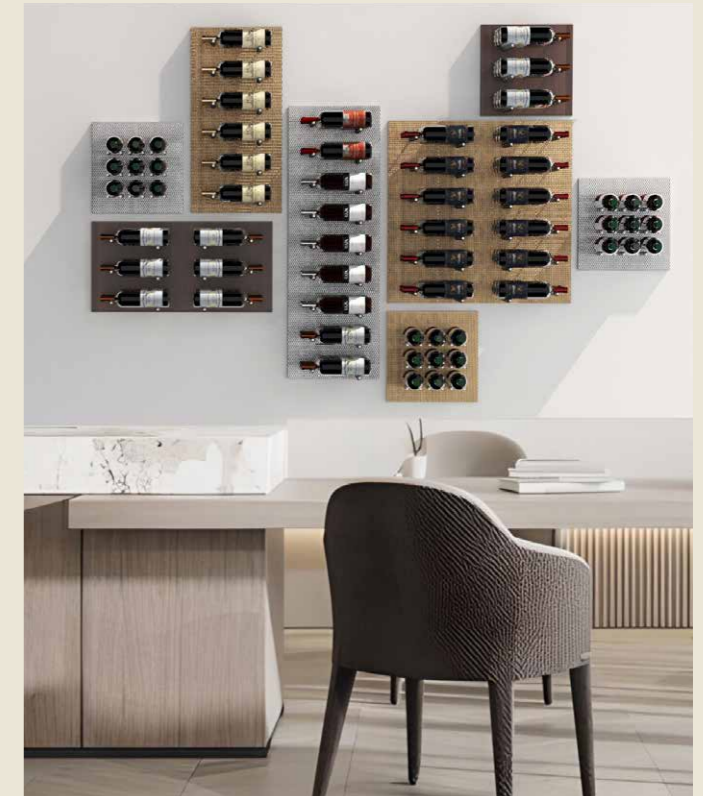
UnSpiral Cellars

The modular UnSpiral Cellar solution lets you create elegant professional-standard wine storage yourself, wherever you want. Offering total flexibility, it's ideal for a statement wine wall or existing cellar – and is completely scalable to suit your space.



Wine Rooms & Wine Walls

For the ultimate in cellaring indulgence, we'll design, manufacture and install a wine cellar, room or wall, and personalise it entirely for you. Our expertise in this area is unrivalled, so you'll enjoy the absolute best of everything, from start to stunning finish.



Ready to Cellar Collection

A modular, self-assembly range of bottle display and kit components similar to those used in our custom-designed wine rooms, available to purchase direct for installation by customer's own trade professionals.

Climate control.

We can help make your Ready To Cellar Collection wine space, fully climate-controlled.



A tailored solution for the perfect wine conditions

When it comes to climate control, there's no such thing as 'one size fits all'. With a myriad of ducted and ductless solutions to choose from, it's very easy to incorrectly or under-specify a cooling system, a mistake that could prove fatal for your wine.

Our in-house team of engineering experts can specify the correct climate control system for your wine room. Not being tied to one particular manufacturer or supplier, we offer impartial advice to deliver a tailored solution appropriate to your particular needs.

Supply

We calculate the capacity, design the airflow and supply a climate control unit ready to be installed by your own engineer based upon information we receive from you.

Supply & fit

We calculate the capacity, design the airflow and supply a climate control unit which our engineers can then fit into any wine room. We can also offer ongoing servicing and maintenance options for projects that we supply and fit.

Consultancy

Independent and impartial climate control advice and systematics for projects located anywhere in the world, without the obligation to purchase from us. As well as specifying the correct system, we will advise on location for the internal and external plant, for services and utilities, and highlight the preparations needed to be made to the room itself to ensure a stable environment.

Our consultancy service is charged on a time basis.

Need some help?

For any questions about the Ready To Cellar Collection or your order, please get in touch with our Customer Advisor team.

Please have accurate measurements (height, width and depth) of the chosen wine space location when speaking to our Customer Advisors.

They will need this information to double check your order before processing it.

Ready to place an order?

To place an order simply enter the required component reference numbers and quantities on the online Ready To Cellar Collection Order form.

Make sure to pay particular attention to specify the correct component finish when ordering.

Order forms can be found on our website www.spiralcellars.com or by scanning the QR code below.

Once we have received the completed order form, one of our Customer Advisors will be in touch to take payment and advise of the next steps.



Scan for Order Form

Call 020 3815 3329
Email info@spiralcellars.com

Spiral Cellars
LONDON

Spiral Cellars Ltd

020 3815 3329
spiralcellars.com

