

Custom designed wine room with 3rd party manufacture and installation.



We were contacted by a Buckinghamshire based client with regards to providing wine storage for a newly acquired second property.

The intention was that this property would become his main residence, but before that could happen, the impressive Victorian building would need major renovation work. Part of this would include the provision of wine storage in which to house the client's liquid assets.

In order to ensure delivery of professional level cellaring conditions in a residential setting, the client was adamant that a specialist cellaring company should manage this aspect of the build, working alongside the overall project build team. As such, he approached Spiral Cellars.

Spiral Cellars

LONDON

The brief

The primary purpose of the wine space was to provide optimal environmental cellaring conditions.

Equally important was creating an elegant interior feature that was in keeping with the traditional feel of the property.

After discussing the size and nature of the clients existing wine collection and anticipated future growth, a 600 bottle cellar capacity was agreed upon. The assumption was that the bottles would be mostly Bordeaux and Burgundy, though a small allowance should be made for case storage as well as loose champagne and magnums.



The design concept

We met with the client, his architect and his contractor at the property before any building work had begun.

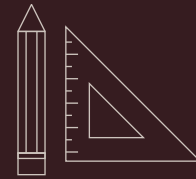
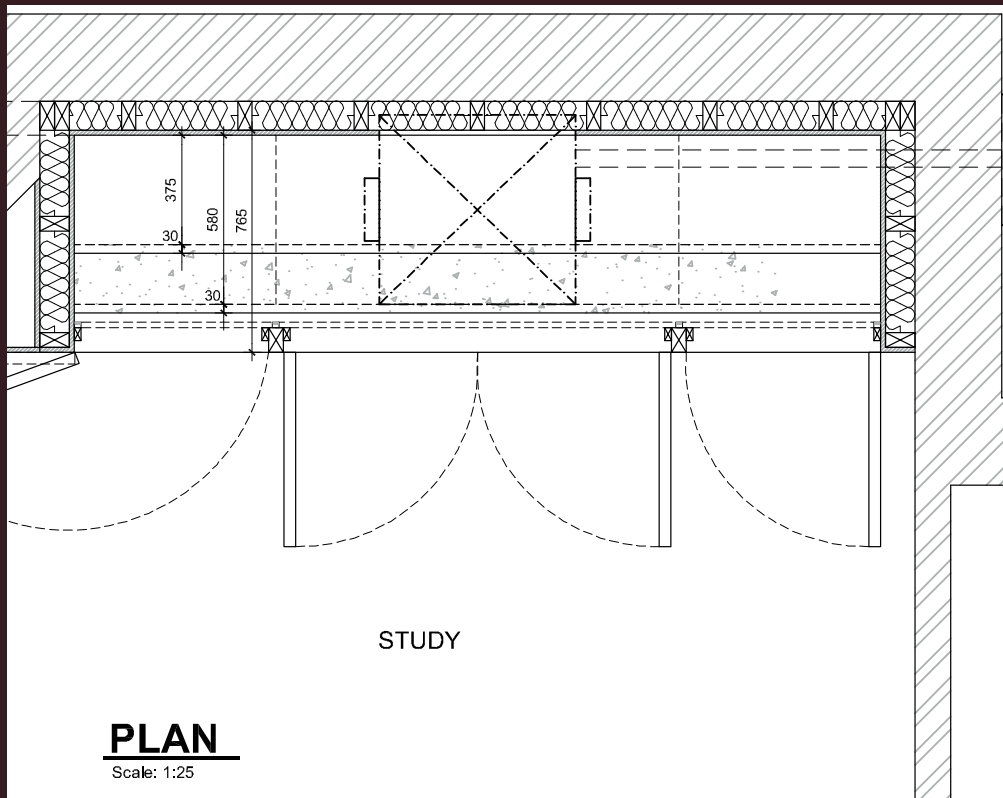
With plans still at the early stage, we were able to suggest several possible locations that would work with the flow of the house. Whilst the property was substantial in size, the client did not want to dedicate an entire room to wine storage.

Various options were discussed before agreeing upon a space-saving, high-capacity wine wall as the best solution – to be situated at the end of a long hallway in what would eventually become a home office.



Computer render of the design

3rd party involvement



We advised that rather than commission our fully bespoke end-to-end service, a more cost-efficient model would be to engage our Custom Design team to handle the design element (thereby ensuring the key objective of delivering cellaring conditions be met) but then engage a third party to manufacture and install.

Operating in this manner would deliver a significant overall cost saving of between 20-30%. Leessa London, a bespoke joinery firm were thus engaged.

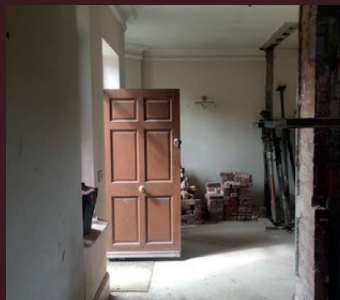
The installation

Upon final design approval, a comprehensive set of technical plans were prepared to hand over to Leessa to craft and install.

Included within the package was everything Leessa would need to successfully complete the wine wall – plus of course, they had regular access to the Spiral Cellars Design team for advice and clarification:

- concept visuals
- material specifications
- M&E requirements
- technical drawings
- climate control and vapour barrier specifications

After just 6 weeks, and following a final check by ourselves, the client was able to start moving wine in to his beautiful new wine space.



Room at site visit stage



Wall stripped back ready for boxing and vapour control



Structural frame erected



False wall with access panel created to disguise climate control

Design details

Specific project details include:

- Dark stained oak cabinetry accented with textured brass detailing and hardware
- Central diamond & lattice racking for loose bottle storage, flanked on either side with diagonal arrangement
- Shallow base unit case display with brass inserts (4 x standard and 2 x magnum case)
- Fully temperature and humidity climate controlled, with unit concealed behind central fascia panel with removable service panel
- Minimal frame, double glazed cellar-grade glass doors
- Concealed in-frame soft-glow LED wash lighting



Side-flanking diagonal racking



In-frame wash lighting



Brass case runner

“Working with Spiral Cellars plans was a joy. The materials I received were so thorough I was able to pass them directly to the production team without any questions. Each section was thoughtfully designed and shown in detail on a single page. I can only imagine how much work it took for Spiral Cellars to prepare such detailed drawings”



Alexander Zdanovs,
Director, Leessa London

To find out more about our products and services, please visit our website or contact our Customer Adviser team.

020 3815 3329
info@spiralcellars.com
spiralcellars.com